



GENERAL PRODUCTS

JULY 2021

<u>CONSUMER UNITS</u>	<u>1</u>
<u>COMPONENTS</u>	<u>7</u>
<u>METAL CONSUMER UNITS</u>	<u>24</u>
<u>ENCLOSURES</u>	<u>29</u>
<u>ENCLOSED SWITCHGEAR</u>	<u>35</u>
<u>EV CHARGING</u>	<u>43</u>
<u>CEE POWER CONNECTORS</u>	<u>53</u>

MADE IN
EU
MANUFACTURED
IN THE EU


COMPREHENSIVE
WARRANTIES


80 YEARS
OF EXPERTISE

TERMS & CONDITIONS OF SALE

1. DEFINITIONS

In these terms and conditions the following words shall have the following meanings:-

'The Company' shall mean Garo Electric Ltd and its successors in Title. 'The Customer' shall mean the person, firm or company offering to purchase goods from the Company and its successors in Title. 'Goods' shall mean the articles and services which are the subject matter of the contract between the Company and the Customer.

2. GENERAL

All business undertaken by the Company is undertaken on the terms and conditions herein contained and any variations will only be binding on the parties hereto if such variation is in writing and signed on behalf of the Company. Any order placed by a customer is deemed to be upon the terms and conditions herein contained.

3. SETTLEMENT TERMS

All items are strictly nett and due for payment 30 days after date of the invoice unless otherwise specified in writing by the Company. The Customer shall not be entitled to make any deductions whether by reason of set-off or for any other reason.

4. PRICES – EXCLUSIVE OF V.A.T.

All quotations are given at current prices, but are subject to alterations without notice in accordance with prices ruling at time of delivery. The Company shall be entitled to recover from the Customer by way of addition to prices, such amounts which the Company may become liable to pay in respect of Value Added Tax or other legally imposed Tax in relation to the goods, also currency and other Surcharges will be charged, where applicable, at the rate ruling at date of dispatch.

5. CARRIAGE

The Company normally makes no charge for delivery from its warehouse within the usual van delivery area when delivered by its vehicles, but reserves the right to charge carriage on deliveries by whatever means of transport outside such usual delivery areas. Where the goods are specially ordered from manufacturers, the Company reserves the right to pass on any carriage and customs clearance charges as may arise.

6. GUARANTEE

The Company gives no guarantee or warranty whether expressed or implied in relation to the Goods but the Company shall do everything within its power to protect the Customers interests and to that extent shall assign to the Customer the benefit of such guarantee or warranty (if any) as may be given by the manufacturers in relation to the Goods. The Company does not accept liability for any consequential damage howsoever arising from the purchase by the Customer of the Goods whether the same may arise out of any use of the Goods or the installation of the same.

7. DELIVERY DATES

Whilst the Company shall always do its best to comply with a date quoted for delivery of goods it accepts no responsibility for loss or damage arising from failure to comply.

8. RETURNS

Goods correctly supplied may not be returned without the Company's agreement in writing. Goods so returned must be consigned Carriage Paid and accompanied by a Packing Note stating the Company's Delivery Note Number. The Company reserves the right to make a re-stocking charge. Goods will be accepted only if returned in perfect condition and in unopened and perfect packaging. A clear and authorised signature must be obtained from the Company.

8.(i) CLAIMS

(a) Any claim relating to goods delivered under this contract shall be notified to the Company in writing within seven (7) days from the date on which the said goods are received by the Customer or his agent and the Customer shall afford the Company reasonable facilities for examining the goods before they have been disposed of, or in any way altered. All goods damaged in transit and accepted in that condition by the Customer shall not be the subject of any claim hereunder.

(b) Any claim or claims in respect of goods delivered under this contract shall not be grounds for withholding payment of accounts and shall not give any right of set-off against payment due to the Company.

(c) No claim for damages to or shortages of goods during transit will be considered unless the Company and the carriers are advised in writing within seven (7) days of delivery of goods and no claim for non-delivery will be considered unless the Company and the carriers are advised within ten (10) days from date of dispatch of goods.

9. PACKING AND TRANSIT

Goods received damaged should be signed for as 'Damaged', otherwise claims in this regard cannot be submitted. Customers are asked to note the prescribed periods for notification of damage to or shortage and non-delivery of goods and the submission of claims in respect thereof. The Company shall not be liable for any loss resulting from Customers' failure to comply with the requirements of the Railway Executive, Haulage Companies and Post Regulations and the Customer undertakes to indemnify the Company against such loss (if any).

10. ORDERS

Written confirmation of telephone orders should be clearly marked as such, otherwise the Company cannot be responsible should the order be duplicated. The Company reserves the right to refuse any order placed, or to refuse cancellation of any order, or to suspend delivery of any order from time to time, if the account is in arrears.

11. WAIVER

A waiver by the Company at any term or condition shall not constitute a general waiver of such term or condition.

12. OWNERSHIP

(a) The property in the goods shall not be deemed to have passed to the Customer until the goods and any debts owing to the Company whether arising from this contract or otherwise have been paid for and discharged in full.

(b) In the meantime the goods shall remain the sole property of the Company and the Customer shall be bailee thereof.

(c) If the Customer fails to pay any sums due in accordance with the terms of this agreement the Company may after giving seven days notice in writing to the Customer take possession of the goods and may for that purpose, by himself his servants or agents, enter upon any land or premises on or in which the goods or any part of them are believed by the Company to be situated.

(d) The Customer agrees not to sell, assign, sub-let or otherwise part with the possession of the goods until the property in the goods passes to the Customer in accordance with the provisions of paragraphs (a) and (b)

(e) The risk of any loss or damage to or deterioration of the goods from whatever cause shall be borne by the Customer from when the Customer, his servants, licensees or agents receive possession of the goods

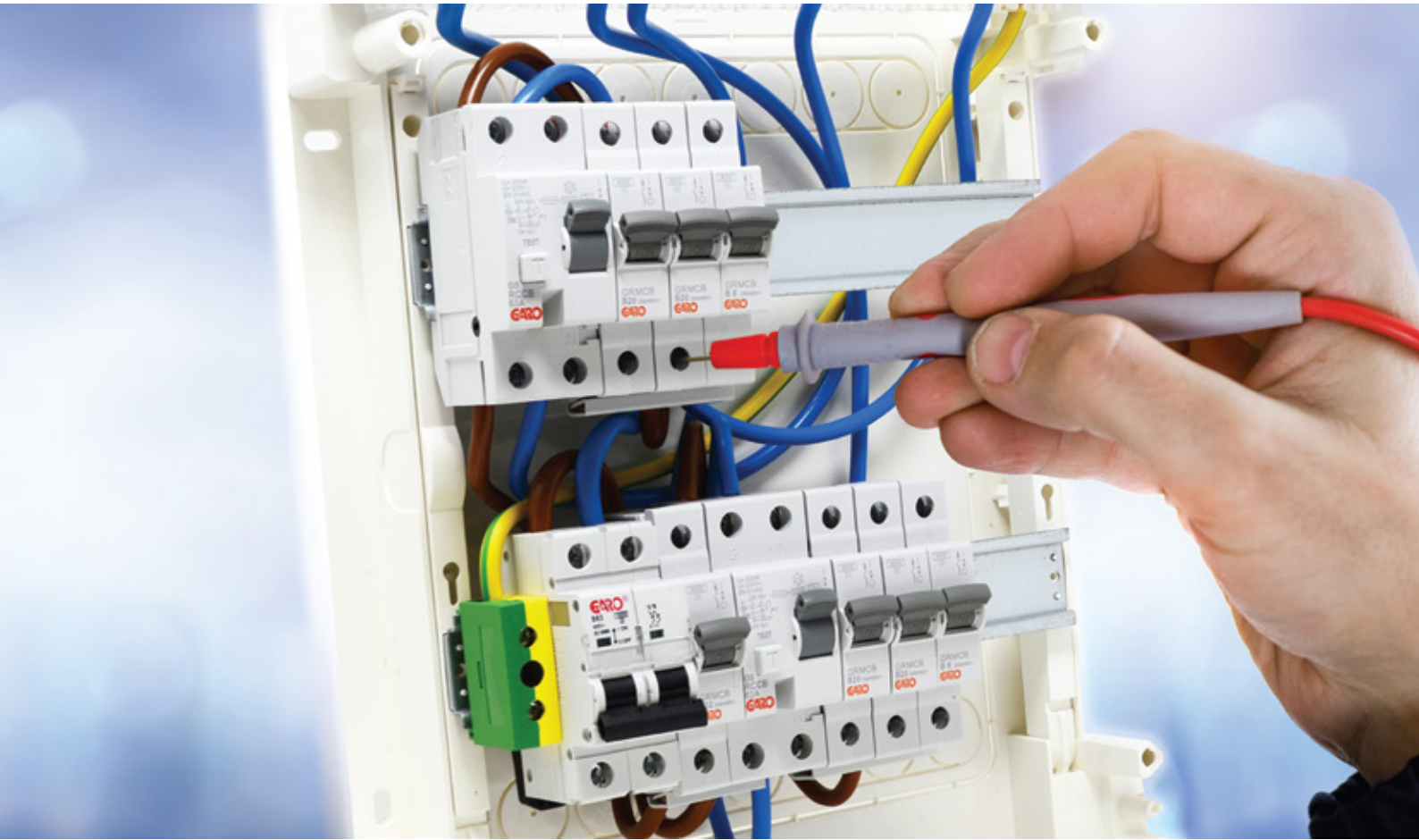
(f) If payment is overdue and not discharged, the Company may without prejudice to any of its rights and remedies and with due warning to the Customer by registered mail, recover and resell any or all such goods and may enter upon the Customer's premises for that purpose. Recovery costs will become the liability of the Customer and shall include all labour, tools, plant hire and all other relevant charges-costs.

13. CHOICE OF LAW

These conditions and the contract shall be subject to and construed in accordance with the laws of the Republic of Ireland. The Customer submits to the jurisdiction of the Irish Courts of Law.

TABLE OF CONTENTS

NON-METALLIC CONSUMER UNIT	1	ENCLOSURES	29
Consumer Units IP41 Surface - Type A	2	Argenta Metal Enclosures IP65	30
Consumer Units IP41 Flush - Type A	3	Polyester Enclosures IP66	31
Consumer Units IP41 Surface - Type B	4	Metal Enclosures Flush	32
Consumer Units IP41 Flush - Type B	5	Junction Boxes IP67	32
Shower Priority & Non Priority	5	Inspection Windows Plastic IP54	32
Dimensions	5	Plastic Enclosures	33
Consumer Units Accessories	6	Distribution Enclosures IP40 - IP41	34
COMPONENTS	7	ENCLOSED SWITCHGEAR	35
Miniature Circuit Breaker	8	Safety Switches	36
Residual Current Circuit Breaker (RCD)	14	AC and SOLAR DC Switches & Contactors	36
Residual Current Breaker (RCBO)	15	Isolator Switches Enclosed IP53 IP55 IP65	37
Modular Isolator & Changeover Switches	17	Fuse Switches BS Type IP55	38
Timers	18	Fuse Switches NH Type IP65 IP55	39
Multifunction Timer	18	Changeover Switches	40
Test Relays & Time Lag Switches	18	Metal Clad Switchgear /ESB CT Chamber	40
Shower Relays + Shower Timer	18	 	
Kilowatt Hour Meters	19	ISOLATORS, C/O, FUSES	
Contactors	19	Isolators & Changeover Switches	17
Switch Fuses DO Type	19	Disconnectors	41
Surge Protection Devices	20	Fuses & Fuse Bases	42
Busbar	21	 	
Bell Transformer - Bell - Chime	21	ELECTRIC VEHICLE CHARGING	43
Accessories	22	Domestic Wall Chargers	44
Distribution Blocks	22	EV Distribution Boards	46
Terminal Blocks	23	Commercial Wall Chargers	47
Group Link Boxes	23	Dual Wall Chargers	48
 		Pillar Chargers	49
18TH EDITION METAL CONSUMER UNIT	24	EV Accessories	50
IP41 Surface Metal with Isolator	25	Fast DC Chargers	51
IP41 Surface Metal with RCCB	25	Billing Back Office Solutions	52
IP41 Surface Metal with Isolator & RCCB	26	 	
Garage Boards	26	CEE POWER CONNECTORS	53
IP41 Surface Metal with Surge Protection	26	CEE Easy Finder - Popular Items	54
Priority & Non-Priority Shower Boards	27	Plugtops	55
Electrical Vehicle Distribution Boards	27	Couplers	58
Consumer Units Accessories	27	Sockets & Inlets - Wall Mounting	60
TPN Distribution Boards	28	3 Way - Connection Outlets	64
Long RCBO 10kA	28	16A to 13A BS Adaptor	64
		Panel Mounting Outlets & Inlet	65
		Combination Units	69
		Interlocked Socket Outlets	70
		Pro Scene Black Plugs & Couplers	72



CONSUMER UNITS



IS 10101:2020
COMPLIANT



CE CERTIFIED



ENHANCED
PROTECTION



COMPREHENSIVE
WARRANTIES

NON-METALLIC CONSUMER UNITS IP41 WITH MAIN MCB TYPE B 10kA

Main MCB Type B 10kA

Item	Enclosure	Total Modules	Free Modules	Incoming	RCCB	MCB	Surge	Trade Price
G13B-7A	G1-13	14	1	MCB 63A	2 x 40A	7	No	179.63
G18B-7A	G1-18	18	5	MCB 63A	2 x 63A	7	Option	163.22
G26B-7A	G2-26	28	15	MCB 63A	2 x 63A	7	Option	193.16
G36B-7A	G2-36	36	23	MCB 63A	2 x 63A	7	Option	180.50
G39B-7A	G3-39	42	29	MCB 63A	2 x 63A	7	Option	224.14



G26B-7A

Main MCB Type B 10kA & Surge Protection

Item	Enclosure	Total Modules	Free Modules	Incoming	RCCB	MCB	Surge	Trade Price
G18B-7AS	G1-18	18	3	MCB 63A	2 x 63A	7	Yes	221.79
G26B-7AS	G2-26	28	13	MCB 63A	2 x 63A	7	Yes	254.33
G36B-7AS	G2-36	36	21	MCB 63A	2 x 63A	7	Yes	238.68
G39B-7AS	G3-39	42	27	MCB 63A	2 x 63A	7	Yes	286.00



G26B-7AS

NON-METALLIC SURFACE CONSUMER UNITS C/W MAIN ISOLATOR 100AMP

Main ISOLATOR 100A

Item	Enclosure	Total Modules	Free Modules	Incoming	RCCB	MCB	Surge	Trade Price
G13I-7A	G1-13	14	1	Isolator	2 x 40A	7	No	179.63
G18I-7A	G1-18	18	5	Isolator	2 x 63A	7	Option	182.27
G26I-7A	G2-26	28	15	Isolator	2 x 63A	7	Option	193.16
G36I-7A	G2-36	36	23	Isolator	2 x 63A	7	Option	178.60
G39I-7A	G3-39	42	29	Isolator	2 x 63A	7	Option	224.14



G13I-7A

Main ISOLATOR 100A & Surge Protection

Item	Enclosure	Total Modules	Free Modules	Incoming	RCCB	MCB	Surge	Trade Price
G18I-7AS	G1-18	18	3	Isolator	2 x 63A	7	Yes	221.79
G26I-7AS	G2-26	28	13	Isolator	2 x 63A	7	Yes	253.71
G36I-7AS	G2-36	36	21	Isolator	2 x 63A	7	Yes	264.55
G39I-7AS	G3-39	42	27	Isolator	2 x 63A	7	Yes	285.38



G18I-7AS

NON-METALLIC FLUSH CONSUMER UNITS C/W MAIN MCB TYPE B 10KA

Main MCB Type B 10kA

Item	Enclosure	Total Modules	Free Modules	Incoming	RCCB	MCB	Surge	Trade Price
K12B-7A	SIL14PO-PH	14	1	MCB 63A	2 x 40A	7	no	216.97
K24B-7A	SIL28PO-PH	28	15	MCB 63A	2 x 63A	7	Option	236.15
K36B-7A	SIL42PO-PH	42	29	MCB 63A	2 x 63A	7	Option	261.15



K24B-7A

Main MCB Type B 10kA & Surge Protection

Item	Enclosure	Total Modules	Free Modules	Incoming	RCCB	MCB	Surge	Trade Price
K24B-7AS	SIL28PO-PH	28	13	MCB 63A	2 x 63A	7	Yes	296.49
K36B-7AS	SIL42PO-PH	42	27	MCB 63A	2 x 63A	7	Yes	323.13



K24B-7AS

NON-METALLIC FLUSH CONSUMER UNITS C/W MAIN ISOLATOR 100AMP

Main ISOLATOR 100A

Item	Enclosure	Total Modules	Free Modules	Incoming	RCCB	MCB	Surge	Trade Price
K12I-7A	SIL14PO-PH	14	1	Isolator	2 x 40A	7	No	216.97
K24I-7A	SIL28PO-PH	28	15	Isolator	2 x 63A	7	Option	235.52
K36I-7A	SIL42PO-PH	42	29	Isolator	2 x 63A	7	Option	261.34



K24I-7A

Main ISOLATOR 100A & Surge Protection

Item	Enclosure	Total Modules	Free Modules	Incoming	RCCB	MCB	Surge	Trade Price
K24I-7AS	SIL28PO-PH	28	13	Isolator	2 x 63A	7	Yes	295.87
K36I-7AS	SIL42PO-PH	42	27	Isolator	2 x 63A	7	Yes	322.51



K24I-7AS

NON-METALLIC MAIN OVERCURRENT PROTECTIVE DEVICE IP55 - Single Phase

Item	Enclosure	Total Modules	Free Modules	Incoming Device	Surge	Trade Price
G4-63B	CDN4G	4	3	MCB 63A 10KA type B	No	29.68
G4-80B	CDN4G	4	2	MCB 80A 10KA type B	No	45.13
G4-80C	CDN4G	4	2	MCB 80A 10KA type C	No	45.13
G4-100C	CDN4G	4	2	MCB 100A 10KA type C	No	51.38



G4-63B

NON-METALLIC CONSUMER UNITS IP41 WITH MAIN MCB TYPE B 10kA

Main MCB Type B 10kA

Item	Enclosure	Total Modules	Free Modules	Incoming	RCBO	RCCB	MCB	Surge	Trade Price
G18B-7B	G1-18	18	5	MCB 63A	2	1 x 63A	5	Option	191.27
G26B-7B	G2-26	28	15	MCB 63A	2	1 x 63A	5	Option	208.69
G36B-7B	G2-36	36	23	MCB 63A	2	1 x 63 A	5	Option	214.44
G39B-7B	G3-39	42	29	MCB 63A	2	1 x 63A	5	Option	239.66

Main MCB Type B 10kA & Surge Protection

Item	Enclosure	Total Modules	Free Modules	Incoming	RCBO	RCCB	MCB	Surge	Trade Price
G18B-7BS	G1-18	18	3	MCB 63A	2	1 x 63A	5	Yes	221.79
G26B-7BS	G2-26	28	13	MCB 63A	2	1 x 63A	5	Yes	254.33
G36B-7BS	G2-36	36	21	MCB 63A	2	1 x 63A	5	Yes	267.34
G39B-7BS	G3-39	42	27	MCB 63A	2	1x 63A	5	Yes	286.00



G18B-7B



G26B-7BS

NON-METALLIC SURFACE CONSUMER UNITS C/W MAIN ISOLATOR 100AMP

Main ISOLATOR 100A

Item	Enclosure	Total Modules	Free Modules	Incoming	RCBO	RCCB	MCB	Surge	Trade Price
G18I-7B	G1-18	18	5	Isolator	2	1 X 63A	5	Option	197.80
G26I-7B	G2-26	28	15	Isolator	2	1 x 63A	5	Option	208.69
G36I-7B	G2-36	36	23	Isolator	2	1 x 63A	5	Option	214.44
G39I-7B	G3-39	42	29	Isolator	2	1 x 63A	5	Option	239.66

Main ISOLATOR 100A & Surge Protection

Item	Enclosure	Total Modules	Free Modules	Incoming	RCBO	RCCB	MCB	Surge	Trade Price
G18I-7BS	G1-18	18	3	Isolator	2	1 x 63A	5	Yes	252.13
G26I-7BS	G2-26	28	13	Isolator	2	1 x 63A	5	Yes	293.05
G36I-7BS	G2-36	36	21	Isolator	2	1 x 63A	5	Yes	267.34
G39I-7BS	G3-39	42	27	Isolator	2	1 x 63A	5	Yes	320.60



G18I-7B



G26I-7BS

NON-METALLIC FLUSH CONSUMER UNITS C/W MAIN MCB TYPE B 10KA

Main MCB Type B 10kA

Item	Enclosure	Total Modules	Free Modules	Incoming	RCBO	RCCB	MCB	Surge	Trade Price
K24B-7B	SIL28PO-PH	28	15	MCB 63A	2	1 x 63A	5	Option	251.67
K36B-7B	SIL42PO-PH	42	29	MCB 63A	2	1 x 63A	5	Option	276.86

Main MCB Type B 10kA & Surge Protection

Item	Enclosure	Total Modules	Free Modules	Incoming	RCBO	RCCB	MCB	Surge	Trade Price
K24B-7BS	SIL28PO-PH	28	13	MCB 63A	2	1 x 63A	5	Yes	295.87
K36B-7BS	SIL42PO-PH	42	27	MCB 63A	2	1 x 63A	5	Yes	322.51



K24B-7B

NON-METALLIC FLUSH CONSUMER UNITS C/W MAIN ISOLATOR 100AMP

Main ISOLATOR 100A

Item	Enclosure	Total Modules	Free Modules	Incoming	RCBO	RCCB	MCB	Surge	Trade Price
K24I-7B	SIL28PO-PH	28	15	Isolator	2	1 x 63A	5	Option	251.05
K36I-7B	SIL42PO-PH	42	29	Isolator	2	1 x 63A	5	Option	276.86

Main ISOLATOR 100A & Surge Protection

Item	Enclosure	Total Modules	Free Modules	Incoming	RCBO	RCCB	MCB	Surge	Trade Price
K24I-7BS	SIL28PO-PH	28	13	Isolator	2	1 x 63A	5	Yes	328.51
K36I-7BS	SIL42PO-PH	42	27	Isolator	2	1 x 63A	5	Yes	357.08



K24I-7BS

SHOWER BOARDS - Priority & Non-Priority

Item	Enclosure	Incoming	Description	Relays	Timer	Trade Price
CV8-PS1	CV8PO-RR	40A RCBO	PRIORITY	1	0	167.13
CV8-NPS	CV8PO-RR	40A RCBO	NON PRIORITY	2	0	250.71
CV12-NPST	CV12PO-RR	40A RCBO	NON PRIORITY	2	1	324.65
G13-3NPS	G1-13	40A RCBO	NON PRIORITY	3	0	465.77



CV8-NPS

DIMENSIONS

Item	Modules	Rows	Internal Width	Internal Height	Internal Depth	External Width	External Height	External Depth
CDN4G	4	1	-	-	-	84	174	111
G1-13	14	1	-	-	-	300	245	125
G1-18	18	1	-	-	-	395	235	110
G2-26	26	2	-	-	-	300	370	125
G2-36	36	2	-	-	-	395	360	110
G3-39	42	3	-	-	-	300	495	125
SIL 14 PO-PH	14	1	314	314	86	368	343	93
SIL 28 PO-PH	28	2	314	414	86	368	443	93
SIL 42 PO-PH	42	3	314	539	86	368	568	93

Consumer Unit Accessories

Minature Circuit Breakers Pole 6kA Curve - B

Item	Rated (A)	Packing Units	Trade Price
MCB GRB106	6	12	6.87
MCB GRB110	10	12	6.87
MCB GRB116	16	12	6.87
MCB GRB120	20	12	6.87
MCB GRB125	25	12	6.87
MCB GRB132	32	12	6.87
MCB GRB140	40	12	9.13
MCB GRB150	50	12	15.74
MCB GRB163	63	12	18.60



Residual Current Breaker with Overcurrent Protection (RCBO) 6kA TYPE A

Item	Rated (A)	Modules	Poles	mA	For cable size mm ²	Trade Price
RCBO GRB06	6	2	2	30	1-25	30.05
RCBO GRB10	10	2	2	30	1-25	30.05
RCBO GRB16	16	2	2	30	1-25	30.05
RCBO GRB20	20	2	2	30	1-25	30.05
RCBO GRB25	25	2	2	30	1-25	30.05
RCBO GRB32	32	2	2	30	1-25	30.05
RCBO GRB40S	40	2	2	30	1-25	30.05



Other Accessories

Item	Description	Trade Price
TRAN8-12-24	Bell Transformer 8V 12V 24 V	16.77
GPTT2-300-2-0	Surge Prot 2 Pole Class 11	56.79
G-GPT2	Surge Prot'n Kit Comprising:2 Pole Surge, Earth Cable , Busbar	63.34
G-1L-1000-10ISO	SP Busbar 57 mod 80A 1000mm 10sq	13.37
S-1L-145-10ISO	SP 10mm ² 8mod busbar	1.77
S-1L-210-10ISO	SP 10mm ² 12mod 80A busbar	3.52
G-2L-66ML	DP Busbar 2 mod 80A 66mm 10sq	3.20
G-2L-106ML	DP Busbar 3 mod 80A 106mm 10sq	7.63
G-2L-140ML	DP Busbar 4 mod 80A 140mm 10sq	9.16
G-2L-210-10M5	DP Busbar 6 mod 80A 210mm 10sq	5.27
ZA2W	Blanking strip white 1 metre length	6.31
TC-1A	Blanking strip white 4.5 mods	1.06
FBR365	Brown 10 Sq 365mm Cable	3.54
FBL365	Blue 10 Sq 365mm Cable	3.54
FE365	Gm/Ylw 10sq Earth cable 365mm	3.54
BRASS9	9Way Brass Terminal for Cons Unit	2.21
BRASS18	18way Brass Terminal for Garo Cons Unit	5.83
N7	Clip on Neutral Bar 7way 16 sq mm	2.32
E7	Clip on Earth Bar 7way 16 sq mm	2.27
SILN-E	Support 16 Entries Earth and Neutral	16.28



TRAN8-12-24



BLANKING STRIP



N7



E7



COMPONENTS



IS 10101:2020
COMPLIANT



CE CERTIFIED



ENHANCED
PROTECTION



COMPREHENSIVE
WARRANTIES

MINIATURE CIRCUIT BREAKER 6kA CURVE B

1 Pole 6kA Curve - B

Item	Rated (A)	Packing Units	Trade Price
MCB GRB106	6	12	6.87
MCB GRB110	10	12	6.87
MCB GRB116	16	12	6.87
MCB GRB120	20	12	6.87
MCB GRB125	25	12	6.87
MCB GRB132	32	12	6.87
MCB GRB140	40	12	9.13
MCB GRB150	50	12	15.74
MCB GRB163	63	12	18.60



1-Pole MCB 6kA

2 Pole 6kA Curve - B

Item	Rated (A)	Packing Units	Trade Price
MCB GRB206	6	6	18.60
MCB GRB210	10	6	18.60
MCB GRB216	16	6	18.60
MCB GRB220	20	6	18.60
MCB GRB225	25	6	18.60
MCB GRB232	32	6	18.60
MCB GRB240	40	6	23.22
MCB GRB250	50	6	27.04
MCB GRB263	63	6	32.10



3-Pole MCB 6kA

3 Pole 6kA Curve - B

Item	Rated (A)	Packing Units	Trade Price
MCB GRB306	6	4	30.05
MCB GRB310	10	4	30.05
MCB GRB316	16	4	30.05
MCB GRB320	20	4	30.05
MCB GRB325	25	4	30.05
MCB GRB332	32	4	30.05
MCB GRB340	40	4	37.14
MCB GRB350	50	4	43.25
MCB GRB363	63	4	51.16

MINIATURE CIRCUIT BREAKER 6kA CURVE C

1 Pole 6kA Curve - C

Item	Rated (A)	Packing Units	Trade Price
MCB GRC101	1	12	8.36
MCB GRC102	2	12	8.36
MCB GRC104	4	12	8.36
MCB GRC106	6	12	7.15
MCB GRC110	10	12	7.15
MCB GRC116	16	12	7.15
MCB GRC120	20	12	7.15
MCB GRC125	25	12	7.15
MCB GRC132	32	12	7.15
MCB GRC140	40	12	9.32
MCB GRC150	50	12	16.05
MCB GRC163	63	12	18.97



1-Pole MCB 6kA

2 Pole 6kA Curve - C

Item	Rated (A)	Packing Units	Trade Price
MCB GRC206	6	6	18.60
MCB GRC210	10	6	18.60
MCB GRC216	16	6	18.60
MCB GRC220	20	6	18.60
MCB GRC225	25	6	18.60
MCB GRC232	32	6	18.60
MCB GRC240	40	6	23.22
MCB GRC250	50	6	27.04
MCB GRC263	63	6	32.10



3-Pole MCB 6kA

3 Pole 6kA Curve - C

Item	Rated (A)	Packing Units	Trade Price
MCB GRC306	6	4	30.05
MCB GRC310	10	4	30.05
MCB GRC316	16	4	30.05
MCB GRC320	20	4	30.05
MCB GRC325	25	4	30.05
MCB GRC332	32	4	30.05
MCB GRC340	40	4	37.14
MCB GRC350	50	4	43.25
MCB GRC363	63	4	51.16

MINIATURE CIRCUIT BREAKER 10kA CURVE B

1-Pole 10kA Curve - B

Item	Rated (A)	Packing Units	Trade Price
MCB GSB 106	6	12	8.52
MCB GSB 110	10	12	8.52
MCB GSB 116	16	12	8.52
MCB GSB 120	20	12	8.52
MCB GSB 125	25	12	8.52
MCB GSB 132	32	12	8.52
MCB GSB 140	40	12	10.56
MCB GSB 150	50	12	21.15
MCB GSB 163	63	12	25.27



1-Pole MCB 10kA

2-Pole 10kA Curve - B

Item	Rated (A)	Packing Units	Trade Price
MCB GSB 206	6	6	20.46
MCB GSB 210	10	6	20.46
MCB GSB 213	13	6	20.46
MCB GSB 216	16	6	20.46
MCB GSB 220	20	6	20.46
MCB GSB 225	25	6	20.46
MCB GSB 232	32	6	20.46
MCB GSB 240	40	6	31.25
MCB GSB 250	50	6	43.90
MCB GSB 263	63	6	54.40



2-Pole MCB 10kA

3-Pole 10kA Curve - B

Item	Rated (A)	Packing Units	Trade Price
MCB GSB 306	6	4	41.91
MCB GSB 310	10	4	41.91
MCB GSB 316	16	4	41.91
MCB GSB 320	20	4	41.91
MCB GSB 325	25	4	41.91
MCB GSB 332	32	4	41.91
MCB GSB 340	40	4	59.63
MCB GSB 350	50	4	73.96
MCB GSB 363	63	4	89.29



3-Pole MCB 10kA

MINIATURE CIRCUIT BREAKER 10kA CURVE B 80A

Item	Rated (A)	Packing Units	Trade Price
80ASPBM	80	4	31.24
80ADPBM	80	4	66.76

MINIATURE CIRCUIT BREAKER 10kA CURVE C

1-Pole 10kA Curve - C

Item	Rated (A)	Packing Units	Trade Price
MCB GSC 101	1	12	11.04
MCB GSC 102	2	12	11.04
MCB GSC 104	4	12	11.04
MCB GSC 106	6	12	8.52
MCB GSC 110	10	12	8.52
MCB GSC 116	16	12	8.52
MCB GSC 120	20	12	8.52
MCB GSC 125	25	12	8.52
MCB GSC 132	32	12	8.52
MCB GSC 140	40	12	10.56
MCB GSC 150	50	12	21.15
MCB GSC 163	63	12	25.27



1-Pole MCB 10kA

2-Pole 10kA Curve - C

Item	Rated (A)	Packing Units	Trade Price
MCB GSC 206	6	6	20.46
MCB GSC 210	10	6	20.46
MCB GSC 216	16	6	20.46
MCB GSC 220	20	6	20.46
MCB GSC 225	25	6	20.46
MCB GSC 232	32	6	20.46
MCB GSC 240	40	6	23.66
MCB GSC 250	50	6	43.90
MCB GSC 263	63	6	54.40



2-Pole MCB 10kA

3-Pole 10kA Curve - C

Item	Rated (A)	Packing Units	Trade Price
MCB GSC 301	1	4	52.44
MCB GSC 302	2	4	52.44
MCB GSC 304	4	4	52.44
MCB GSC 306	6	4	41.91
MCB GSC 310	10	4	41.91
MCB GSC 316	16	4	41.91
MCB GSC 320	20	4	41.91
MCB GSC 325	25	4	41.91
MCB GSC 332	32	4	41.91
MCB GSC 340	40	4	59.63
MCB GSC 350	50	4	73.96
MCB GSC 363	63	4	89.29



3-Pole MCB 10kA

MINIATURE CIRCUIT BREAKER 10kA CURVE D

1-Pole 10kA Curve - D

Item	Rated (A)	Packing Units	Trade Price
MCB GSD 106	6	12	8.52
MCB GSD 110	10	12	8.52
MCB GSD 116	16	12	8.52
MCB GSD 120	20	12	8.52
MCB GSD 125	25	12	8.52
MCB GSD 132	32	12	8.52



1-Pole MCB 10kA

2-Pole 10kA Curve - D

Item	Rated (A)	Packing Units	Trade Price
MCB GSD 206	6	6	20.46
MCB GSD 210	10	6	20.46
MCB GSD 216	16	6	20.46
MCB GSD 220	20	6	20.46
MCB GSD 225	25	6	20.46
MCB GSD 232	32	6	20.46



2-Pole MCB 10kA

3-Pole 10kA Curve - D

Item	Rated (A)	Packing Units	Trade Price
MCB GSD 306	6	4	41.91
MCB GSD 310	10	4	41.91
MCB GSD 316	16	4	41.91
MCB GSD 320	20	4	41.91
MCB GSD 325	25	4	41.91
MCB GSD 332	32	4	41.91



3-Pole MCB 10kA

LOCKING DEVICE

Locking device makes it possible to lock dolly in a specific position on the component.

Item	Description	Trade Price
MCB LOCK	Locking device suitable for Miniature Circuit Breakers in the 6kA & 10kA ranges.	11.93



MCB LOCK

AUXILIARY CONTACTS

For remote indication of the status of Miniature Circuit Breakers.

Item	Description	Modules	AC12	DC12	Trade Price
MCB GR AUX	Auxiliary Contact for 6kA & 10KA breakers 1no + 1nc	0,5	230V-6A	110V-1A	9.30



MCB GR AUX

MINIATURE CIRCUIT BREAKER 10kA CURVE C 80 - 125A

1-Pole 10kA Curve C

Item	Rated (A)	Packaging Units	Modules	Trade Price
GCB C180	80	12	1.5	31.07
GCB C1100	100	12	1.5	35.20
GCB C1125	125	12	1.5	39.68

2 Pole 10kA Curve C

Item	Rated (A)	Packaging Units	Modules	Trade Price
GCB C280	80	6	3	114.90
GCB C2100	100	6	3	109.21
GCB C2125	125	6	3	194.62



3-Pole 10kA
HIGH CURRENT MCB

3 Pole 10kA Curve C

Item	Rated (A)	Packaging Units	Modules	Trade Price
GCB C380	80	4	4.5	146.88
GCB C3100	100	4	4.5	164.70
GCB C3125	125	4	4.5	183.05

RESIDUAL CURRENT CIRCUIT BREAKERS

GARO's range of RCCBs are **10kA, Type A or Type B** and are tested and certified to standard EN 61008. The range can be fed from the TOP or BOTTOM. On each 2-Pole 10kA device it is possible to connect the neutral conductor on the right or left side. Protection to IP20. Auxiliary Contact see previous page.

GARO RCCB Type A & B Rated Voltage 200-415V AC Max Torque 3 Nm Protection Class IP20

10kA TYPE A

Item	Rated (A)	Modules	Poles	mA	Max cable size mm ²	Trade Price
2 Pole						
GCD 25-2-03	25	2	2	30	25	36.51
GCD 40-2-03	40	2	2	30	25	35.39
GCD 63-2-03	63	2	2	30	25	40.32
GCD 63-2-1	63	2	2	100	25	71.25
GCD 63-2-3	63	2	2	300	25	71.25
GCD 80-2-03	80	2	2	30	25	93.99
GCD 100-2-1	100	2	2	100	25	102.23



GCD 25-2-03

Item	Rated (A)	Modules	Poles	mA	Max cable size mm ²	Trade Price
------	-----------	---------	-------	----	--------------------------------	-------------

4 Pole

GCD 25-4-03	25	4	4	30	25	63.24
GCD 40-4-03	40	4	4	30	25	63.24
GCD 63-4-03	63	4	4	30	25	81.49
GCD 80-4-03	80	4	4	30	25	106.97
GCD 100-4-03	100	4	4	30	25	252.85
GCD 40-4-3	40	4	4	300	25	63.24
GCD 63-4-3	63	4	4	300	25	87.52
GCD 63-4-5	63	4	4	500	25	87.52
GCD 80-4-3	80	4	4	300	25	115.94
GCD 100-4-1	100	4	4	100	25	220.01
GCD 100-4-3	100	4	4	300	25	220.01



GCD 63-4-5

10kA TYPE B

GCD63-4-03B	63A	4	4	30	25	391.74
-------------	-----	---	---	----	----	--------

RCCB TYPE S

Selective - minimum time delay 40ms.

Item	Rated (A)	Modules	Poles	mA	Max cable size mm ²	Trade Price
------	-----------	---------	-------	----	--------------------------------	-------------

2 Pole

GCD 63-2-1S	63	2	2	100	25	112.30
GCD 63-2-3S	63	2	2	300	25	112.30

4 Pole

GCD 63-4-1S	63	4	4	100	25	147.44
GCD 63-4-3S	63	4	4	300	25	147.44

AUXILIARY CONTACTS

Item	Description	Trade Price
HLPKD	Aux for RCCB (2 Pole + 4 Pole Suitable for GCD25, 40, 63, 80 Only)	12.31

RESIDUAL CURRENT BREAKER with Overcurrent Protection (RCBO) 6kA ****TYPE A****

An RCBO is a combination of an RCCB and MCB. The 6kA range is **Type A** and can be supplied from the top or bottom. The products are approved and certified according to EN 61009.

GARO RCBO 6kA Type A Rated Voltage 200-415V AC Max Torque 3 Nm Protection Class IP20

6kA TYPE A						
Item	Rated (A)	Modules	Poles	mA	For cable size mm ²	Trade Price
2 Pole 6kA Curve B - TYPE A						
RCBO GRB06	6	2	2	30	1-25	30.83
RCBO GRB10	10	2	2	30	1-25	30.83
RCBO GRB16	16	2	2	30	1-25	30.83
RCBO GRB20	20	2	2	30	1-25	30.83
RCBO GRB25	25	2	2	30	1-25	30.83
RCBO GRB32	32	2	2	30	1-25	30.83
RCBO GRB40S	40	2	2	30	1-25	30.83

Item	Rated (A)	Modules	Poles	mA	For cable size mm ²	Trade Price
4 Pole 6kA Curve B - TYPE A						
RCBO GSB06	6	4	3P+N	30	1-25	132.30
RCBO GSB10	10	4	3P+N	30	1-25	132.30
RCBO GSB16	16	4	3P+N	30	1-25	132.30
RCBO GSB20	20	4	3P+N	30	1-25	132.30
RCBO GSB25	25	4	3P+N	30	1-25	132.30
RCBO GSB32	32	4	3P+N	30	1-25	132.30

Item	Rated (A)	Modules	Poles	mA	For cable size mm ²	Trade Price
2 Pole 6kA Curve C - TYPE A						
RCBO GRC06	6	2	2	30	1-25	30.83
RCBO GRC10	10	2	2	30	1-25	30.83
RCBO GRC16	16	2	2	30	1-25	30.83
RCBO GRC20	20	2	2	30	1-25	30.83
RCBO GRC25	25	2	2	30	1-25	30.83
RCBO GRC32	32	2	2	30	1-25	30.83
RCBO GRC40	40	2	2	30	1-25	30.83

Item	Rated (A)	Modules	Poles	mA	For cable size mm ²	Trade Price
4 Pole 6kA Curve C - TYPE A						
RCBO GSC06	6	4	3P+N	30	1-25	132.30
RCBO GSC10	10	4	3P+N	30	1-25	132.30
RCBO GSC16	16	4	3P+N	30	1-25	132.30
RCBO GSC20	20	4	3P+N	30	1-25	132.30
RCBO GSC25	25	4	3P+N	30	1-25	132.30
RCBO GSC32	32	4	3P+N	30	1-25	132.30



2 Pole RCBO 6kA



4 Pole RCBO 6kA

RCBO ACCESSORIES

Item	Description	Trade Price
LB2	Locking mechanism for RCBO & RCCB	6.96
HLPKO	Aux for RCBO 2 Pole + 4 Pole	15.08



RESIDUAL CURRENT BREAKER with Overcurrent Protection (RCBO) 10kA

An RCBO is a combination of an RCCB and MCB. The 10kA range is **Type A** and can be supplied from the top or bottom. The products are approved and certified according to EN 61009.

GARO RCBO 10kA Type A Rated Voltage 200-415V AC Max Torque 3 Nm Protection Class IP20

Item	Rated (A)	Modules	Poles	mA	For cable size mm ²	Trade Price
2 Pole 10kA Curve B						
RCBO GS B06A2P	6	2	2	30	1-25	45.89
RCBO GS B10A2P	10	2	2	30	1-25	45.89
RCBO GS B16A2P	16	2	2	30	1-25	45.89
RCBO GS B20A2P	20	2	2	30	1-25	45.89
RCBO GS B25A2P	25	2	2	30	1-25	45.89
RCBO GS B32A2P	32	2	2	30	1-25	45.89
RCBO GS B40A2P	40	2	2	30	1-25	45.89

Item	Rated (A)	Modules	Poles	mA	For cable size mm ²	Trade Price
2 Pole 10kA Curve - C						
RCBO GS C06A2P	6	2	2	30	1-25	45.89
RCBO GS C10A2P	10	2	2	30	1-25	45.89
RCBO GS C16A2P	16	2	2	30	1-25	45.89
RCBO GS C20A2P	20	2	2	30	1-25	45.89
RCBO GS C25A2P	25	2	2	30	1-25	45.89
RCBO GS C32A2P	32	2	2	30	1-25	45.89
RCBO GS C40A2P	40	2	2	30	1-25	45.89



2 Pole RCBO 10kA

1 MOD RESIDUAL CURRENT BREAKER with Overcurrent Protection (RCBO) 6kA

The 1 Mod 6kA range is **Type A** 1P + N RCBO and **MUST ONLY** be supplied from the **bottom**. The products are approved and certified according to EN 61009.

GARO RCBO 6kA Type A Rated Voltage 200-415V AC Max Torque 3 Nm Protection Class IP20

Item	Rated (A)	Modules	Poles	mA	For cable size mm ²	Trade Price
2 Pole 6kA Curve B						
RCBO GI B06	6	1	1 + N	30	1-6	36.20
RCBO GI B10	10	1	1 + N	30	1-6	36.20
RCBO GI B16	16	1	1 + N	30	1-6	36.20
RCBO GI B20	20	1	1 + N	30	1-6	36.20
RCBO GI B25	25	1	1 + N	30	1-6	36.20

Item	Rated (A)	Modules	Poles	mA	For cable size mm ²	Trade Price
2 Pole 6kA Curve C						
RCBO GI C06	6	1	1 + N	30	1-6	36.20
RCBO GI C10	10	1	1 + N	30	1-6	36.20
RCBO GI C16	16	1	1 + N	30	1-6	36.20
RCBO GI C20	20	1	1 + N	30	1-6	36.20
RCBO GI C25	25	1	1 + N	30	1-6	36.20



1 Mod 2 Pole RCBO

Item	Description	Modular Length	For cable size mm ²	Trade Price
ACCESSORIES				
AS-35-SLISOSO	Terminal Connector		25	2.08
SKN0021-10	SP Busbar 10 mm ² to suit 1mod RCBO	12		15.36
SKN0029-10	TP Busbar 10 mm ² to suit 1mod RCBO	12		25.43

RESIDUAL CURRENT BREAKER with Overcurrent Protection (RCBO) 10kA ****TYPE B****

An RCBO is a combination of an RCCB and MCB. This 10kA range is **Type B** and can be supplied from the top or bottom. The products are approved and certified according to EN 61009.

GARO RCBO 10kA Type B Rated Voltage 200-415V AC Max Torque 3 Nm Protection Class IP20

Item	Rated (A)	Modules	Poles	mA	For cable size mm ²	Trade Price
------	-----------	---------	-------	----	--------------------------------	-------------

2 Pole 10kA Curve B - TYPE B

RCBOGRB06M4B	6	4	2	30	1-25	395.40
RCBOGRB10M4B	10	4	2	30	1-25	395.40
RCBOGRB13M4B	13	4	2	30	1-25	395.40
RCBOGRB16M4B	16	4	2	30	1-25	395.40
RCBOGRB20M4B	20	4	2	30	1-25	395.40
RCBOGRB26M4B	25	4	2	30	1-25	395.40
RCBOGRB32M4B	32	4	2	30	1-25	395.40
RCBOGRB40M4B	40	4	2	30	1-25	395.40

Item	Rated (A)	Modules	Poles	mA	For cable size mm ²	Trade Price
------	-----------	---------	-------	----	--------------------------------	-------------

2 Pole 10kA Curve - C - TYPE B

RCBOGRC06M4B	6	4	2	30	1-25	395.40
RCBOGRC10M4B	10	4	2	30	1-25	395.40
RCBOGRC16M4B	16	4	2	30	1-25	395.40
RCBOGRC20M4B	20	4	2	30	1-25	395.40
RCBOGRC25M4B	25	4	2	30	1-25	395.40
RCBOGRC32M4B	32	4	2	30	1-25	395.40
RCBOGRC40M4B	40	4	2	30	1-25	395.40



ARC Fault Detection Type B & C - RCBO

Item	Rated (A)	Modules	Poles	mA	For cable size mm ²	Trade Price
------	-----------	---------	-------	----	--------------------------------	-------------

RCBO-AFDD-B06A2P	6	3	2	30	1-25	237.11
RCBO-AFDD-B10A2P	10	3	2	30	1-25	237.11
RCBO-AFDD-B16A2P	16	3	2	30	1-25	237.11
RCBO-AFDD-B20A2P	20	3	2	30	1-25	237.11
RCBO-AFDD-B25A2P	25	3	2	30	1-25	237.11
RCBO-AFDD-B32A2P	32	3	2	30	1-25	237.11
RCBO-AFDD-B40A2P	40	3	2	30	1-25	237.11

ARC Fault Detection - TYPE C

RCBO-AFDD-C06A2P	6	3	2	30	1-25	237.11
RCBO-AFDD-C10A2P	10	3	2	30	1-25	237.11
RCBO-AFDD-C16A2P	16	3	2	30	1-25	237.11
RCBO-AFDD-C20A2P	20	3	2	30	1-25	237.11
RCBO-AFDD-C25A2P	25	3	2	30	1-25	237.11
RCBO-AFDD-C32A2P	32	3	2	30	1-25	237.11
RCBO-AFDD-C40A2P	40	3	2	30	1-25	237.11

MODULAR ISOLATOR

AC22 and certified to EN60947-3.

Item	Type	AC21-AC22 (A)	Modules	Poles	Operating Voltage V	For cable size mm ²	Trade Price
------	------	---------------	---------	-------	---------------------	--------------------------------	-------------

With dolly

GSV 1100	Isolator	100	1	1	230	35	9.60
GSV 2100	Isolator	100	2	2	400	35	20.11
GSV 3100	Isolator	100	3	3	400	35	31.42
GSV 4125	Isolator	125	4	4	400	35	44.88



GSV 2100

MODULAR CHANGEOVER SWITCHES

Item	Type	AC21- AC22 (A)	Modules	Poles	Operating Voltage V	Trade Price
------	------	-------------------	---------	-------	------------------------	----------------

With toggle

Enclosure class IP20

HOA 1	H-O-A	10	2	1	440	29.54
HOA 2	H-O-A	10	2	2	440	35.29



HOA 1

ELECTRONIC TIMERS

Digital and Astronomical (SOLAR) time switches with daily and weekly adjustable programs. Battery reserve of 3 years (Li-ion type CR-2032). Charge reserve of 1 minute (for battery replacement). Halogen and incandescent = 1500W (@ 240V). Fluorescent = 600W (@ 240V)

Item	Modules	Channels	Relay Capacity	Trade Price
DV1KT3	2	1	250V AC - 16(10)A	77.57
DV2KT3	2	2	250V AC - 16(10)A	100.91
DV1K1M	1	1	250V AC - 16(10)A	113.23

Item	Modules	Channels	Relay Capacity	Programable	Trade Price
ASTRO1KT3	2	1	250V AC - 16(10)A	Dusk to dawn	98.04
ASTRO2KT3	2	2	250V AC - 16(10)A	Dusk to dawn	161.12



DV1KT3



DV1K 1M



ASTRO2KT3

MECHANICAL & ELECTROMECHANICAL TIMERS

Item	Modules	Relay Capacity	Quadrant Type	Intervention Time (min)	Intervention Precision	Trade Price
D1M MEK	1	250V AC - 16(4)A	24 hours - 96 trips x 15 mins	15 mins	+/- 5 mins	38.10
D3M MEK	3	250V AC - 16(4)A	24 hours - 48 trips x 30 mins	30 mins	+/- 7.5 mins	45.15
V3M MEK	3	250V AC - 16(4)A	168 hours - 48 trips x 3.5 hrs	3.5 hours	+/- 52.5 mins	87.24

Time switches with daily and weekly adjustable programs. Charge reserve of 150 hours. Din rail mounting



D3M MEK

MULTIFUNCTION TIMER

Item	Description	Modules	Capacity	Functions	Trade Price
GCRM - 91H	Multifunction Time Relay	1	16A AC-DC 12-240V	10 x 0.15 - 10 days	48.09



TEST RELAYS & TIME LAG SWITCHES

Item	Description	Contact	Trade Price
DCTU	Emergency Light Test Relay - Din Rail mounting	1 x c-o	56.30
COLUMBUS	Pneumatic Time Delay Switch - 6A, 5 secs - 20 mins	1 x c-o	49.10
GTA8	Staircase Timer 1 mod, 1 - 7 minutes		35.13



DCTU

SHOWER RELAY + TIMER

Item	Description	Rated(A)	Voltage	Trade Price
LSR11	Load drop relay 6,7	39A	230 Volt	49.10
SR 1000	Shower Timer 6 - 10		Set for 6 or 10 minute shower	77.96



KILOWATT HOUR METERS

Din rail mounted energy meters MID certified.

Item	Description	Measures	Mod-ules	Rated Current (A)	Trade Price
GNM1D	Garó SP Meter 45A Pulse MID	KWH, KW, V & A	1	45	65.58
GNM1D-RS485	Garó SP Meter 45A Modbus MID	KWH, KW, V & A	1	45	77.26
GNM1D-100-RS485	Garó SP Meter 100A Bi-directional Modbus	KWH, KW, V & A	2	100	145.70
GNM3D	Garó TP 65A Meter Pulse MID	KWH, KW, V & A	4	63	150.76
GNM3D-RS485	Garó TP 65A Meter Modbus MID	KWH, KW, V & A	4	63	163.95
GNM3TD	Garó MFM Dual RJ11 Input Pulse + Modbus	KWH, KW, V & A	4	160-630	217.22
GNT160	160A TP CT RJ11 150 cm Lead		CT	160	62.40
GNT250	250A TP CT RJ11 150 cm Lead		CT	250	70.05
GNT630	630A TP CT RJ11 150 cm Lead		CT	630	77.42
GM3T-RS485	Garó MFM 5A CT Input Pulse + Modbus	KWH, KW, V & A	4	6000	250.20
GDT36-300A	300 / 5A Split Core CT	Set of 3			360.00
GDT36-600A	600 / 5A Split Core CT	Set of 3			386.00



GNM1D



GNM3TD & GNT630

CONTACTORS

Item	Contacts	Poles	Mod-ules	Rated AC-1[A]	Coil Voltage (V)	Type	Trade Price
Modular contactors for din rail mounting							
GK20-1NO1NC	1 NO + 1 NC	2	1	20	230	AC	20.70
GK20-2NO	2 NO	2	1	20	230	AC	29.09
GK20-2NC	2 NC	2	1	20	230	AC	29.09
GK24-4NO	4 NO	4	2	25	230	AC-DC	34.88
GK24-4NC	4 NC	4	2	25	230	AC-DC	34.88
GK32-2NO	2 NO	2	1	32	230	AC-DC	35.59
GK32-4NO	4 NO	4	2	32	230	AC-DC	38.18
GK40-1NO	1 NO	1	1	40	230	AC-DC	52.39
GK40-4NO	4 NO	4	3	40	230	AC-DC	83.30
GK40-2NO2NC	2 NO + 2 NC	4	3	40	230	AC-DC	109.78
GK63-4NO	4 NO	4	3	63	230	AC-DC	109.60



GK40 - 2NO 2NC



GKD

Item	Description	Modules	Trade Price
------	-------------	---------	-------------

ACCESSORIES FOR CONTACTORS

GKD	Distance Piece, 12gm, temperatures < 40 ° C	0,5	3.90
GKN 11	Auxiliary Contacts		19.38

SWITCHFUSE TYPE DO

Item	Poles	Max Rated Current A	Modules	Trade Price
For fuses see page 41 & page 21 for busbar to suit				
STVDO 21P	1	63	1.5	13.20
STVDO 22P	2	63	3	36.51
STVDO 23P	3	63	4.5	51.15



NOTE: GARO's DO switchfuses STV can only be switched on when the fuse has been fully inserted.

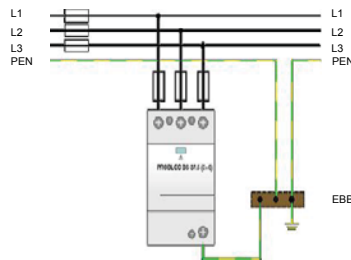
SURGE PROTECTION DEVICES

Item	Poles	Class	Signal Relay	Impulse Current (10-350)uS	Max Current (8-20)uS	Back up Fuse Maximum	Trade Price
------	-------	-------	--------------	----------------------------	----------------------	----------------------	-------------

CLASS 1 SURGE PROTECTION DEVICES

BSR 275 3pol	3	1, 11, 111	yes	25KA per pole	100KA per pole	250A gl	539.90
BSR 275 4pol	4	1, 11, 111	yes	25KA per pole	100KA per pole	250A gl	715.21
GBR 275 3pol	3	1, 11	yes	25KA per pole	100KA per pole	160A gl	337.70
GBR 275 4pol	4	1, 11	yes	25KA per pole	100KA per pole	160A gl	439.02

Category IEC-EN : Class 1 - Type 1
 Location of use : Main distribution board
 Network: TNC-S
 In (8-20) : 25kA per pole
 I_{max} (8-20) : 25kA per pole
 Standard : IEC61643-1



BSR 275 3pol



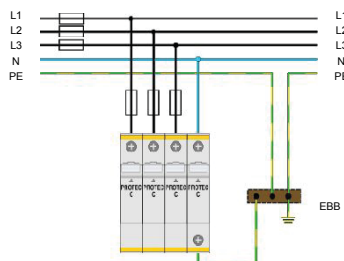
GBR 275 4pol

Item	Poles	Class	Signal Relay	Impulse Current (10-350)uS	Back up Fuse Maximum	Trade Price
------	-------	-------	--------------	----------------------------	----------------------	-------------

CLASS 11 SURGE PROTECTION DEVICES

GPTT2-300-1-0	1	11	no	5KA per pole	125A	29.58
GPTT2-300-1-0-R	1	11	yes	5KA per pole	125A	41.31
GPTT2-300-2-0	2	11	no	5KA per pole	125A	56.79
GPTT2-300-2-0-R	2	11	yes	5KA per pole	125A	72.72
GPTT2-300-3-0	3	11	no	5KA per pole	125A	85.14
GPTT2-300-3-0-R	3	11	yes	5KA per pole	125A	107.78
GPTT2-300-4-0	4	11	no	5KA per pole	125A	113.50
GPTT2-300-4-0-R	4	11	yes	5KA per pole	125A	139.84
GPT275plug	1	11	yes	5KA per pole	125A	39.13
G-GPT2	2	11	no	5KA per pole	125A	63.34

Category IEC-EN : Class 11 - Type 11
 Location of use : Main - Sub distribution board
 Network: TNC-S
 In (8-20) : 5kA per pole
 I_{max} (8-20) : 20kA per pole
 Standard : IEC61643-1



G-GPT2
Surge Protection Kit

SURGE PROTECTION DEVICES

Item	Poles	Class	Signal Relay	Impulse Current (10-350)uS	Max Current (8-20)uS	Backup Fuse Maximum	Trade Price
------	-------	-------	--------------	----------------------------	----------------------	---------------------	-------------

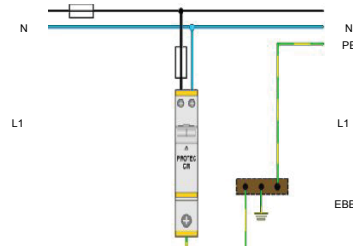
CLASS 111 SURGE PROTECTION DEVICES

PDM 320	1	111	no	n-a	10KA per pole	63A	90.06
PDMR 320	1	111	yes	n-a	10KA per pole	63A	105.63
PDM 320plug	1	111	yes	n-a	10KA per pole	63A	81.26
GTS 170	1	111	yes	n-a	20KA per pole	63A	115.36
GTS 170plug	1	111	yes	n-a	20KA per pole	63A	95.65



PDM 320

Category IEC-EN : Class 111 - Type 111
 Location of use : Sub - Local distribution board
 Network : TNC-S
 In (8-20) : 5kA per pole
 I_{max} (8-20) : 10kA per pole
 Standard : IEC61643-1

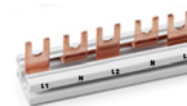
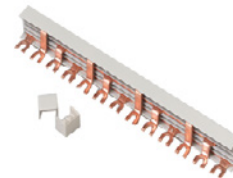


BUSBAR

Item	Description	Current capacity with end input (A)	Current capacity with central input (A)	Trade Price
------	-------------	-------------------------------------	---	-------------

Pin type busbar with insulation

S-1L-1000-10I	10 mm ² 1-phase, 57 mod	63	100	14.28
S-2L-1000-10	10 mm ² 2-phase, 57 mod	63	100	25.74
S-3L-1000-10	10 mm ² 3-phase, 57 mod	63	100	28.74
S-3L-1000-16	16 mm ² 3-phase, 57 mod	80	130	43.77
S-4L-1000-16	16 mm ² for 4 Pole RCCB	80	130	62.45
S-1L-2MOD-10ISO	10mm ² 1-phase 2mod insulated busbar			0.60
S-1L-27-1000	16 mm ² 1-phase	80	130	42.66
S-3L-27-1000	16 mm ² 3-phase, for do - neoz fuse holders	80	130	53.94
S-1L-145-10-ISO	10 mm ² 1-phase, 8 mod	63	100	1.77
S-1L-210-10-ISO	10 mm ² 1-phase, 12 mod	63	100	3.52



Fork type busbar with insulation

G-1L-1000-10ISO	10 mm ² 1-phase, 57 mod	63	100	13.37
G-2L-1000-10M5	10 mm ² 2-phase, 57 mod	63	100	25.35
G-3L-1000-10CM5	10 mm ² 3-phase, 57 mod	63	100	27.52
G-L1-N-L2-N-L	16 mm ² 3-phase+N, 57 mod	80	130	69.02
G-4L-1000-16	16 mm ² 3-phase+N	80	130	60.64



BELL TRANSFORMER - BELL - CHIME

Item	Description	Modules	Rated Current	Trade Price
TRAN 8-12-24	Bell transformer	2	230-8V,12V,24V 1A	16.77
BIM85	Door Chime (Double Sound)			14.36



TRAN8-12-24

ACCESSORIES

Item	Description	Trade Price
Terminals and Connectors		
AS25-SN	Cable Connector Pin to suit 25 mm ² cable	1.99
AS25-GN	Cable Connector Fork to suit 25 mm ² cable	1.99
AS35-S	Cable Connector Pin to suit 35 mm ² cable	2.24
AS-35-SLISOSO	Cable Connector Pin to suit 35 mm ² cable. 27mm PITCH	2.08
AS50-SN	Cable Connector Pin to suit 50 mm ² cable. 15mm PITCH	3.53
E7	Earth Terminal Block 7 Way 16 mm ² clips on to DIN rail	2.27
N7	Neutral Terminal Block 7 Way 16 mm ² clips on to DIN rail	2.32
BRASS 9	9 Way Brass Terminal for Garo Consumer Units	2.21
BRASS 18	18 Way Brass Terminal for Garo Consumer Units	5.83
BRASS 3LA	18 Way Brass Terminal for LA Consumer Units	5.63
BRASSBAR	Brass Terminal 6.5 x 9 x 288mm	8.07
BRASSBAR1M	Neutral or Earth Bar 6.5 x 9 x 1000mm 153 way	21.47
KKS1-2	Supports for N-E Terminal Bar (1 metre)	1.17
E15	Earth Terminal 15Way Clip-On	12.68
N15	Neutral Terminal 15Way Clip-On	12.68
NPE35	Earth - Neutral Terminal 160A to suit 35 mm ² cable	13.13
NPE120	Earth - Neutral Terminal 250A to suit 120 mm ² cable	42.15
TBN185	Earth - Neutral Terminal 400A to suit 185 mm ² cable	59.64
DISCT6US	Disconnect Test Terminal	5.34
EPDISCT6U	End Plate for Disconnect Terminal	0.47
RPQ 1000	125A 4 Pole short busbar block	14.00
RPQ 1005	125A 4 Pole long busbar Block	19.08
RPQ 1010	100A 4 Pole longest Busbar Block	24.96
RPQ 1016	160A 4 Pole modular Busbar Block with Top & Bottom entry	58.15
RPQ 1017	160A 4 Pole modular Busbar Block	58.15
RPQ 1020	100A 4 Pole shallow Busbar Block	78.46
RPQ 1025	100A 4 Pole Busbar Block	31.14



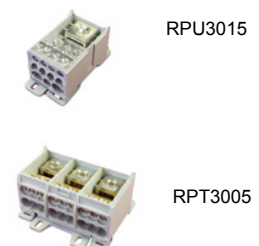
Item	Description	Trade Price
Blanking Strip Plastic		
Covers the empty spaces in the front cover of distribution enclosures		
TC-1A	4.5 modules - easily cut into desired size	1.06
ZA2W	57 modules (1 metre)	6.31



BLANKING STRIP

DISTRIBUTION BLOCKS

Item	Pole	Rating (A)	Incoming Terminals Qty x mm	Outgoing Terminals Qty x mm	kA	Trade Price
RPU 2995	SP	80	1 x 16	2x16,4x6	22	10.31
RPU 3000	SP	125	1 x 35	10x16	25	30.02
RPU 3005	SP	160	1 x 70	10x16	35	30.58
RPU 3010	SP	250	1 x 120	4x10,5x16,2x25	50	47.35
RPU 3015	SP	400	1 x 185	4x10,5x16,2x25	50	47.89
RPU 3020	SP	500	1 x 185	4x10,5x16,2x25	50	52.64
RPT 3000	TP	125	1 x 35	6 x 16	25	58.82
RPT 3005	TP	160	1 x 70	6 x 16	35	61.23



TERMINAL BLOCKS

Item		Size	Colour	Trade Price
GKL 1x50 GRE	Terminal Block A Class	1 x 50	Grey	3.77
GKL 2x50 GRE	Terminal Block A Class	2 x 50	Grey	6.86
GKL 1x50 BLE	Terminal Block A Class	1 x 50	Blue	3.77
GKL 2x50 BLE	Terminal Block A Class	2 x 50	Blue	6.86
GKL 1x50 G-G	Terminal Block A Class	1 x 50	Green/Ylw	3.77
GKL 2x50 G-G	Terminal Block A Class	2 x 50	Green/Ylw	6.86
GKL 1x95 GRE	Terminal Block A Class	1 x 95	Grey	9.52
GKL 2x95 GRE	Terminal Block A Class	2 x 95	Grey	18.42
GKL 1x95 BLE	Terminal Block A Class	1 x 95	Blue	9.52
GKL 2x95 BLE	Terminal Block A Class	2 x 95	Blue	18.42
GKL 1x95 G-G	Terminal Block A Class	1 x 95	Green/Ylw	9.52
GKL 2x95 G-G	Terminal Block A Class	2 x 95	Green/Ylw	18.42
GKL 1x150 GRE	Terminal Block A Class	1 x 150	Grey	15.98
GKL 2x150 GRE	Terminal Block A Class	2 x 150	Grey	32.33
GKL 1x150 BLE	Terminal Block A Class	1 x 150	Blue	15.98
GKL 2x150 BLE	Terminal Block A Class	2 x 150	Blue	32.33
GKL 1x150 G-G	Terminal Block A Class	1 x 150	Green/Ylw	15.98
GKL 2x150 G-G	Terminal Block A Class	2 x 150	Green/Ylw	32.33
GKL 1x240 GRE	Terminal Block A Class	1 x 240	Grey	25.10
GKL 2x240 GRE	Terminal Block A Class	2 x 240	Grey	42.61
GKL 1x240 BLE	Terminal Block A Class	1 x 240	Blue	25.10
GKL 2x240 BLE	Terminal Block A Class	2 x 240	Blue	42.61
GKL 1x240 G-G	Terminal Block A Class	1 x 240	Green/Ylw	25.10



GROUP LINK BOX

Item	Description	Height mm	Width mm	Depth mm	Trade Price
GKLM 2x16 NCG	16sq GRP link box	190	144	131	104.66
GKLM 2x50 NCG	50sq GRP link box	255	180	139	173.90
GKLM 2x95 NCG	95sq GRP link box	380	280	171	325.63



GKLM 2x16 NCG



METAL CONSUMER UNITS



18TH EDITION
COMPLIANT



CE CERTIFIED



ENHANCED
PROTECTION



COMPREHENSIVE
WARRANTIES

CONSUMER UNITS - Surface Metal IP41 BS EN60439-3

Exclusive design for surface mounting. The housing is manufactured in metal and is also fitted with a door. Each unit is supplied with earth and neutral blocks, additional blocks can be fitted on request. The enclosures are manufactured from steel. Applicable standard is EN60439-3 for a rated current of 80A at 400Volts. All GARO consumer units are assembled in our manufacturing facility specialising in quick turnaround on bespoke orders. Amendment 3 compliant
Full CAD design service available.

For Mcb's see pages 8 - 12, RCBO's pages 15 - 17

METAL CONSUMER UNITS IP41 WITH ISOLATOR

Incomer 100A DP Switch Incomer

Item	Incoming		Ways Free	Trade Price
G4S2C	100A	DP Switch	2	43.65
G6S4C	100A	DP Switch	4	48.71
G8S6C	100A	DP Switch	6	52.43
G10S8C	100A	DP Switch	8	56.06
G12S10C	100A	DP Switch	10	59.26
G14S12C	100A	DP Switch	12	61.83
G16S14C	100A	DP Switch	14	65.67
G18S16C	100A	DP Switch	16	68.45
G21S19C	100A	DP Switch	19	81.02



G12S10C

METAL CONSUMER UNITS IP41 WITH RCCB

Incomer 63A DP RCCB

Item	Incoming		Ways Free	Trade Price
G4R2C	63A	DP RCCB	2	60.79
G6R4C	63A	DP RCCB	4	65.71
G8R6C	63A	DP RCCB	6	69.33
G10R8C	63A	DP RCCB	8	71.64
G12R10C	63A	DP RCCB	10	76.35
G14R12C	63A	DP RCCB	12	78.88
G16R14C	63A	DP RCCB	14	82.77
G18R16C	63A	DP RCCB	16	84.44
G21R19C	63A	DP RCCB	19	98.12



G4R2C

Incomer 80A DP RCCB

Item	Incoming		Ways Free	Trade Price
G4R2-80C	80A	DP RCCB	2	79.96
G6R4-80C	80A	DP RCCB	4	86.36
G8R6-80C	80A	DP RCCB	6	89.54
G10R8-80C	80A	DP RCCB	8	92.76
G12R10-80C	80A	DP RCCB	10	95.94
G14R12-80C	80A	DP RCCB	12	98.10
G16R14-80C	80A	DP RCCB	14	105.45
G18R16-80C	80A	DP RCCB	16	108.74
G21R19-80C	80A	DP RCCB	19	121.52



G18R16-80C

For Mcb's see pages 8 - 12, RCBO's pages 15 - 17

Warranty * Mechanical Components MCB, RCD, RCBO 5 Years *EV Chargers 3 Years *All Other 2 Years

METAL CONSUMER UNITS IP41 WITH ISOLATOR & RCCB'S

100A DP Switch Incomer & 63A RCCB'S

Item	Incoming		Ways Free	RCCB	Trade Price
G14SRR4-4C	100A	DP Switch	4-4	2 x 63A	137.73
G16SRR5-5C	100A	DP Switch	5-5	2 x 63A	142.48
G18SRR6-6C	100A	DP Switch	6-6	2 x 63A	143.92
G21SRR7-8C	100A	DP Switch	7-8	2 x 63A	153.69



G16SRR5-5C

100A DP Switch Incomer & 80A RCCB'S

Item	Incoming		Ways Free	RCCB	Trade Price
G14SRR4-4-80C	100A	DP Switch	4-4	2 x 80A	175.90
G16SRR5-5-80C	100A	DP Switch	5-5	2 x 80A	185.48
G18SRR6-6-80C	100A	DP Switch	6-6	2 x 80A	191.89
G21SRR7-8-80C	100A	DP Switch	7-8	2 x 80A	201.49



G16SRR5-5-80C

For MCB's see pages 8 - 12, RCBO's pages 15 - 17

GARAGE BOARDS

Item	RCCB	MCB's	Trade Price
G3R1C	40	40	60.88
G4R2CG	40	6, 16	62.81



G4R2CG

Distribution Boards with Surge Protection c/w 100A DP Switch Incomer

100A Isolator

Item	Incoming		Ways Free	Surge	Trade Price
GS4S	100A	DP Switch	0	Y	101.89
GS6S2C	100A	DP Switch	2	Y	107.10
GS8S4C	100A	DP Switch	4	Y	110.60
GS10S6C	100A	DP Switch	6	Y	112.97
GS12S8C	100A	DP Switch	8	Y	116.17
GS14S10C	100A	DP Switch	10	Y	118.70
GS16S12C	100A	DP Switch	12	Y	122.59
GS18S16C	100A	DP Switch	14	Y	125.38
GS21S17C	100A	DP Switch	17	Y	137.93
GS28S24C	100A	DP Switch	24	Y	156.87
GS32S28C	100A	DP Switch	28	Y	176.20



GS21S17C

100A Isolator & 2 x 80A RCCB'S

Item	Incoming		Ways Free	Surge	RCCB	Trade Price
GS14SRR3-3-80C	100A	DP Switch	6	Y	2 X 80A	212.15
GS16SRR4-4-80C	100A	DP Switch	8	Y	2 X 80A	216.04
GS18SRR5-5-80C	100A	DP Switch	10	Y	2 X 80A	218.82
GS21SRR6-7-80C	100A	DP Switch	13	Y	2 X 80A	230.33
GS28SRR8-12-80C	100A	DP Switch	20	Y	2 X 80A	262.57
GS32SRR10-14-80C	100A	DP Switch	24	Y	2 X 80A	251.58



GS21SRR6-7-80C

Item	Incoming		Dimensions W x H x D	Trade Price
GSF100-80-63	100A	DP SwitchFuse (Standard)	115 x 225 x 62	57.53
GSF100-80-63XL	100A	DP SwitchFuse (Large)	125 x 235 x 90	62.00



G4SF80

PRIORITY AND NON PRIORITY SHOWER BOARDS

Item	Enclosure	Incoming	Description	No. of Showers	Relays	Trade Price
GM6-PS	G6S4	40A RCBO	PRIORITY / EV	2	1	174.05
GM10-PS63	G10S8	63A RCD	PRIORITY	2	1	215.31
GM8-NPS	G8S6	40A RCBO	NON PRIORITY	2	2	210.37
GM14-3NPS	G12S10	40A RCBO	NON PRIORITY	3	3	465.77



ELECTRICAL VEHICLE DISTRIBUTION BOARDS (Metal & Plastic)

Item	Enclosure	Total Modules	Free Modules	Incoming	PEN Fault Detection	IP Rating	Load Management	Trade Price
G2EV40	G2-2	2	0	RCBO A	-	41	-	55.63
G4EV40	G4-4	4	2	RCBO A	-	41	-	58.48
G6EV40PME	G6-6	6	0	RCBO A	Yes	41	-	223.56
G6EVPME	G6-6	6	0	Terminals	Yes	41	-	207.00
G6EVPME132	G6-6	6	0	MCB	Yes	41	-	209.07
GC6EV40PME	GCUT6	6	0	RCBO A	Yes	65	-	244.05
G8EV40PMEB	G8S6	8	0	RCBO B	Yes	41	-	525.78
GC8EV40PMEB	GCUT8	8	0	RCBO B	Yes	65	-	506.22
G12EV40PMEDLMB	G12S10	12	1	RCBO B	Yes	41	Yes	828.00
GC12EV40PMEDLMB	GCUT12	12	1	RCBO B	Yes	65	Yes	828.00



G8EV40PMEB

Consumer Unit Accessories

Minature Circuit Breakers Pole 6kA Curve - B

Item	Rated (A)	Packing Units	Trade Price
MCB GRB106	6	12	6.87
MCB GRB110	10	12	6.87
MCB GRB116	16	12	6.87
MCB GRB120	20	12	6.87
MCB GRB125	25	12	6.87
MCB GRB132	32	12	6.87
MCB GRB140	40	12	9.13
MCB GRB150	50	12	15.74
MCB GRB163	63	12	18.60



Residual Current Breaker with Overcurrent (RCBO) 2 Pole 6kA Curve - B

Item	Rated (A)	Modules	Poles	mA	For cable size mm ²	Trade Price
RCBO LIB06R	6	1		30	1-6	34.93
RCBO LIB10R	10	1		30	1-6	34.93
RCBO LIB16R	16	1		30	1-6	34.93
RCBO LIB20R	20	1		30	1-6	34.93
RCBO LIB25R	25	1		30	1-6	34.93
RCBO LIB32R	32	1		30	1-6	34.93
RCBO LIB40R	40	1		30	1-6	34.93
RCBO LIB45R	45	1		30	1-6	34.93



2 Pole 6kA Curve - C

Item	Rated (A)	Modules	Poles	mA	For cable size mm ²	Trade Price
RCBOLIC06R	6	1		30	1-6	34.93
RCBOLIC10R	10	1		30	1-6	34.93
RCBOLIC16R	16	1		30	1-6	34.93
RCBOLIC20R	20	1		30	1-6	34.93
RCBOLIC25R	25	1		30	1-6	34.93
RCBOLIC32R	32	1		30	1-6	34.93
RCBOLIC40R	40	1		30	1-6	34.93
RCBOLIC45R	45	1		30	1-6	34.93

TPN - Surface Metal IP41

Exclusive design for surface mounting. The housing is manufactured in metal and is also fitted with a door. Each unit is supplied with earth and neutral blocks.

Metal TPN Boards 125A

Item	Ways	Rating (A)	Width mm	Height mm	Depth mm	Trade Price
GTPN12	12	125	465	506	105	125.34
GTPN18	18	125	465	560	105	138.30
GTPN24	24	125	465	614	105	151.25
GTPN30	30	125	465	668	105	176.60
GTPN36	36	125	465	722	105	203.11
GTPN42	42	125	465	777	105	234.81
GTPN48	48	125	465	830	105	265.05
GTPN54	54	125	465	884	105	311.14
GTPN72	72	125	465	1,046	105	388.94



Metal TPN Boards 125A Accessories

Item	Description	Width mm	Height mm	Depth mm	Trade Price
GTPNH1	TPN header box 16 module	465	266	105	36.11
GTPNH2	Cable entry spreader box	465	206	105	24.33
GTPNH3	Cable entry meter box	465	206	105	23.55
GTPN-ADAPTOR	Adaptor TPN to S Phase				5.78
METAL BLANK	1 Mod Metal Blank				0.48
GCD100-4-03	4Pole 100A 30mA RCCB				252.85
GSV4125	4Pole 125A Isolator				44.88
GNM3TD-CT160	Multi function meter c/w 160CT (GNT160)				

MCB's & RCD's pages 8-12

RESIDUAL CURRENT BREAKER with Overcurrent Protection (RCBO) 10kA

Type A, 1P + N RCBO. Certified to IEC 61009-1

2 Pole 10kA Curve - B

Item	Rated (A)	Modules	Poles	mA	For cable size mm ²	Trade Price
RCBOLIB06A	6	1		30	1-6	41.91
RCBOLIB10A	10	1		30	1-6	41.91
RCBOLIB16A	16	1		30	1-6	41.91
RCBOLIB20A	20	1		30	1-6	41.91
RCBOLIB25A	25	1		30	1-6	41.91
RCBOLIB32A	32	1		30	1-6	41.91
RCBOLIB40A	40	1		30	1-6	44.73
RCBOLIB45A	45	1		30	1-6	44.73

2 Pole 10kA Curve - C

Item	Rated (A)	Modules	Poles	mA	For cable size mm ²	Trade Price
RCBOLIC06A	6	1		30	1-6	41.91
RCBOLIC10A	10	1		30	1-6	41.91
RCBOLIC16A	16	1		30	1-6	41.91
RCBOLIC20A	20	1		30	1-6	41.91
RCBOLIC25A	25	1		30	1-6	41.91
RCBOLIC32A	32	1		30	1-6	41.91
RCBOLIC40A	40	1		30	1-6	44.73
RCBOLIC45A	45	1		30	1-6	44.73





ENCLOSURES



IS 10101:2020
COMPLIANT



CE CERTIFIED



ENHANCED
PROTECTION



COMPREHENSIVE
WARRANTIES

ARGENTA METAL ENCLOSURES IP65

The ARGENTA Series comprises a group of metal enclosures suitable for housing switchgear, controlgear and other equipment used in the supply and distribution of electricity.

The enclosures are made with high quality materials in cold-rolled steel plate of up to 2mm thick and coated with RAL 7035 hardened epoxy-polyester paint.

Metal Cabinets * All cabinets complete with mounting plate

Item	Height mm	Width mm	Depth mm	Trade Price
GN302015-GO	300	200	150	70.94
GN302515-GO	300	250	150	72.47
GN303015-GO	300	300	150	75.90
GN403015-GO	400	300	150	93.01
GN403020-GO	400	300	200	99.90
GN404020-GO	400	400	200	111.94
GN504020-GO	500	400	200	126.72
GN504025-GO	500	400	250	134.17
GN604020-GO	600	400	200	132.10
GN604025-GO	600	400	250	149.39
GN604030-GO	600	400	300	164.22
GN606025-GO	600	600	250	203.28
GN606030-GO	600	600	300	228.66
GN705020-GO	700	500	200	201.11
GN806020-GO	800	600	200	237.30
GN806025-GO	800	600	250	244.49
GN806030-GO	800	600	300	275.22
GN808030-GO	800	800	300	347.13
GN806040-GO	800	600	400	320.71
GN1006025-GO	1000	600	250	334.23
GN1008030-GO	1000	800	300	392.82
GN1008040-GO	1000	800	400	448.55
GN1206030-GO	1200	600	300	475.25
GN1208040-GO	1200	800	400	496.46
GN12010030-GO	1200	1000	300	493.81



** Other cabinet sizes available upon request

Metal Cabinet Accessories

Item	For use with Cabinet	Trade Price
CH3025	Din Rail & Cover 2 Row x 8 Mod GN302515	79.19
CH4030	Din Rail & Cover 3 Row x 11 Mod GN403015-20	81.98
CH5040	Din Rail & Cover 3 Row x 16 Mod GN504015-20	89.46
CH6040	Din Rail & Cover 4 Row x 16 Mod GN604020	94.87
CH8060	Din Rail & Cover 5 Row x 26 Mod GN806020	99.91
SP250	Chassis fixing for 250mm box 250mm depth	33.61
SP300	Chassis fixing for 300mm box 300mm depth	35.72
GN48451	7mm Triangular Lock ALL	26.60
GN48456	Quarter Turning Lock with Key ALL	13.35
GN48457	Quarter Turn Key Lock ALL	26.60
GNKEY	7mm Plastic Key ALL	1.32
GN-48423	Wall bracket for Argenta Enclosures	10.21
BRASSBAR1M	Neutral or Earth Bar 6.5 x 9 x 1000mm 153 way	21.47
KKS1-2	Supports for N-E Terminal Bar (1 metre)	1.17



TECHNICAL DATA

Degree of protection
Resistance to impact
Range of temperature
Maximum voltage

IP65
IK09
-25-+40°C
1000V

EN 62208; EN 60439-1-3; 2006-95-CE directive

POLYESTER ENCLOSURES IP66

Enclosures IP66

Item	IP Rating	Height mm	Width mm	Depth mm	Trade Price
POL302514	66	300	250	140	106.32
POL403020	66	400	300	200	138.66
POL404020	66	400	400	200	160.84
POL504020	66	500	400	200	200.63
POL604023	66	600	400	230	228.38
POL605023	66	600	500	230	250.25
POL806030	66	800	600	300	411.26



Modular Chassis

Item	Cabinet Reference	Modules	Rows	Trade Price
PCH4030	POL403020	24	2	82.16
PCH4040	POL404020	36	2	84.69
PCH5040	POL504020	54	3	106.10
PCH6040	POL604023	54	3	121.77
PCH6050	POL605023	69	3	147.39
PCH8060	POL806030	116	4	177.41



Chassis 2 row 36 mod

Accessories

Item	Description	Suitability	Trade Price
SP250	Chassis fixing for 250mm box	250mm depth	33.61
SP300	Chassis fixing for 300mm box	300mm depth	35.72
GN48451	7mm Triangular Lock	ALL	26.60
GN48456	Quarter Turning Lock with Key	ALL	13.35
GN48457	Quarter Turn Key Lock	ALL	26.60
GNKEY	7mm Plastic Key	ALL	1.32
POL29222	Wall bracket for POL Enclosures		17.80

Backplate - Metal

Item	Trade Price
PML3025	5.26
PML4030	7.51
PML4040	9.81
PML5040	15.76
PML6040	15.93
PML6050	38.96
PML8060	43.44

Backplate - Polyester

Item	Trade Price
PPL3025	10.60
PPL4030	15.08
PPL4040	19.30
PPL5040	26.91
PPL6040	32.80
PPL6050	38.60
PPL8060	59.56

TECHNICAL DATA

Degree of protection
Glow wire rating
Resistance to impact
Colour

IP66
960° C
IK10
RAL 9002

FLUSH METAL ENCLOSURES

Item	Description	Height mm	Width mm	Depth mm	Trade Price	
NIM1-14	1 Row 14 Mod Metal Flush Board	35A	268	312	82	151.57
NIM1-20	1 Row 20 Mod Metal Flush Board	35A	268	395	82	176.88
NIM2-28	2 Row 28 Mod Metal Flush Board	50A	393	312	82	175.24
NIM2-40	2 Row 40 Mod Metal Flush Board	50A	393	395	82	209.64
NIM3-42	3 Row 42 Mod Metal Flush Board	50A	518	312	82	195.15
NIM3-60	3 Row 60 Mod Metal Flush Board	50A	518	395	82	260.14
NIM3-75	3 Row 75 Mod Metal Flush Board	50A	518	492	82	291.89
NIM80-4	4 Row 80 Mod Metal Flush Board	50A	718	395	82	330.78
NIM100-5	5 Row 100 Mod Metal Flush Board	50A	843	395	82	360.32



NIM 3-42

JUNCTION BOXES IP67

Junction Boxes with plain sides

Item	IP Rating	Height mm	Width mm	Depth mm	Trade Price
EL111	67	108	108	64	3.33
EL161	67	116	162	76	5.33
EL171	67	151	175	95	8.55
EL231	67	180	241	95	11.45
EL322	67	239	328	129	29.27



Junction Box plain sides

INSPECTION WINDOWS PLASTIC - IP54

Windows are of compact (robust) design and are made of shock-resistant polycarbonate. Ideally suited for mounting by panel builder our range of hinged windows are designed to suit 4 - 18 modules (17.5mm). Windows are hinged to open 180° with holder included for holding window open when required.

Mounting frame made of shock-resistant polycarbonate with integrated gasket for flange mounting. All metal parts are corrosion-resistant. Integrated free position for lead seal.

Item	Modules	a mm	b mm	c mm	d mm	Weight grams	Trade Price
9006 504	4	92	65	72		97	18.43
9006 506	6	128	51	108		127	19.05
9006 509	9	182	78	162		166	24.87
9006 514	13	253	41	73	233	223	29.85
9006 518	18	344	105	324		299	34.30

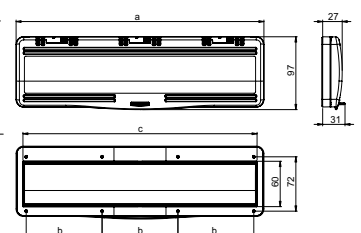
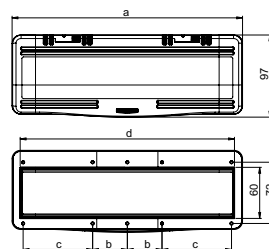
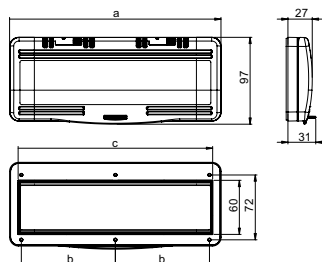
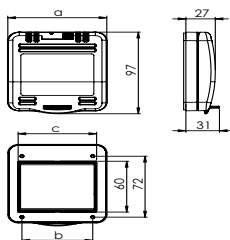


4 Mod window

6 & 9 Mod windows

13 Mod window

18 Mod window



PLASTIC ENCLOSURES

Our range of distribution enclosures come with transparent reversible doors which can be sealed.

They are made from halogen free long-lasting plastic material and are equipped with dust caps, for wall mounting screws, and 1-4 quick locking secured screws.

Enclosures have supports for fixing mounting plates. Cable entries are metric.

Item	Description	IP Rating	Width mm	Height mm	Depth mm	Trade Price
BT2 - GO	1 x 2 Mod Enclosure	20	53	133	80	2.65
BT4 - GO	1 x 4 Mod Enclosure	20	100	133	85	4.12
BV4PTRR - GO	1 x 4 Mod Enclosure	40	180	228	120	17.67
BV8PTRR - GO	1 x 8 Mod Enclosure	40	105	228	191	23.69
CDN 4G	1 x 4 Mod Enclosure	65	84	174	111	19.67
GCUT 4	1 x 4 Modules DIN Rails	65	166	231	113	26.19
GCUT 6	1 x 6 Modules DIN Rails	65	202	231	113	30.24
GCUT 8	1 x 8 Modules DIN Rails	65	238	231	118	34.59
GCUT 112	1 x 12 Modules DIN Rails	65	310	246	148	41.77
GCUT 118	1 x 18 Modules DIN Rails	65	418	246	148	65.67
GCUT 224	2 x 12 (24) Modules DIN Rails	65	310	436	148	69.74
GCUT 236	2 x 18 (36) Modules DIN Rails	65	418	436	148	93.67
GCUT 336	3 x 12 (36) Modules DIN Rails	65	310	586	148	96.31
GCUT 354	3 X 18 (54) Modules DIN Rails	65	418	586	148	135.20
** Din rails can be mounted at two different heights						
GCUT N - E	N + E Bar for GCUT 112 - GCUT 354					18.61



BT2 - GO



BT 4 - GO



GCUT 4



GCUT 6



GCUT 112



GCUT 224



GCUT 336

GCUT TECHNICAL DATA

Degree of protection	IP65	Glow wire rating	650° C
Resistance to impact	IK08	Ball pressure test	70° C
Auto-extinguishing degree	HB (UL94)		

According to 2006-95-CE directive and EN 60439-1 and UNE-EN 60439-3 norms on affected parts.

DISTRIBUTION ENCLOSURES IP 40 - IP41

GM Metal Enclosures

Item	IP Rating	Modules	Rows	Width mm	Height mm	Depth mm	Trade Price
G2-2	40	2	1	80	225	62	14.97
G4-4	40	4	1	115	225	62	15.25
G6-6	40	6	1	125	235	90	21.27
GM 1-6	40	8	1	320	250	95	18.61
GM 1-14	40	14	1	335	300	111	104.22
GM 1-25	40	25	1	515	300	111	144.99
GM 2-28	40	28	2	335	425	111	136.74
GM 2-50	40	50	2	515	425	111	214.20
GM 3-42	40	42	3	335	550	111	159.84
GM 3-75	40	75	3	515	550	111	268.56



GM1-14

MSI Metal Enclosures **

Item	IP Rating	Modules	Rows	Width mm	Height mm	Depth mm	Trade Price
MSI 36-1C	40	36	3	315	530	145	267.32
MSI 48-1C	40	48	4	315	680	145	299.88
MSI 90-2C	40	90	3	610	530	145	368.42
MSI 120-2C	40	120	4	610	680	145	438.67
MSSKL	Lock and key set for MSI cabinets						35.96
TFSO	Flat Flange Size 11						6.26



MSI 36-1C

** MSI Enclosures are supplied without Flanges - please order separately

Plastic Enclosures - surface mounting

Item	IP Rating	Modules	Rows	INTERNAL			EXTERNAL		Trade Price
				Width mm	Height mm	Depth mm	Width mm	Height mm	
CDN4G	41	4	1				84	174	19.67
G1-13	41	14	1				300	245	37.48
G1-18	41	18	1				395	235	25.54
G2-26	41	26	2				300	370	44.39
G2-36	41	36	2				395	360	36.10
G3-39	41	42	3				300	495	69.85



G2-26

Plastic Enclosures - flush mounting c/w metal door

Item	IP Rating	Modules	Rows	Width mm	Height mm	Depth mm	Trade Price
SIL 14 PO-PH	41	14	1	368	343	93	62.78
SIL 28 PO-PH	41	28	2	368	443	93	71.96
SIL 42 PO-PH	41	42	3	368	568	93	101.85
SIL 56 PO-PH	41	56	4	368	753	93	150.47
SIL 70 PO-PH	41	70	5	314	849	93	281.29



BV12PO-GO

Item	Internal "cut-out" Dimensions			External Dimensions		
	Width mm	Height mm	Depth mm	Width mm	Height mm	Depth mm
SIL 14 PO-PH	314	314	86	368	343	93
SIL 28 PO-PH	314	414	86	368	443	93
SIL 42 PO-PH	314	539	86	368	568	93
SIL 56 PO-PH	314	724	86	368	753	93
SIL 70 PO-PH	314	849	86	368	878	93



SIL 14 PO-VO



ENCLOSED SWITCHGEAR



IS 10101:2020
COMPLIANT



CE CERTIFIED



ENHANCED
PROTECTION



COMPREHENSIVE
WARRANTIES

SAFETY SWITCHES ENCLOSED - AC & SOLAR DC - IP65 ABS

Polycarbonate Safety Switches - Grey Body - Red Yellow Handle - 3 Pole

Item	Rating (A)	Poles	IP Rating	Width mm	Height mm	Depth mm	Trade Price
SS 320 IP65	20	3	65	100	125	72	24.73
SS 325 IP65	25	3	65	100	125	72	26.57
SS 332 IP65	32	3	65	100	125	72	29.14
SS 340 IP65	40	3	65	125	175	90	33.71
SS 363 IP65	63	3	65	125	175	90	34.77
SS 380 IP65	80	3	65	190	280	130	73.31
SS 3100 IP65	100	3	65	190	280	130	91.37
SS 3125 IP65	125	3	65	190	280	130	104.49



SS 320 IP65

Polycarbonate Safety Switches - Grey Body - Red Yellow Handle - 4 Pole

Item	Rating (A)	Poles	IP Rating	Width mm	Height mm	Depth mm	Trade Price
SS 420 IP65	20	4	65	100	125	72	27.69
SS 425 IP65	25	4	65	100	125	72	29.75
SS 432 IP65	32	4	65	100	125	72	30.96
SS 440 IP65	40	4	65	125	175	90	37.72
SS 463 IP65	63	4	65	125	175	90	39.67
SS 480 IP65	80	4	65	190	280	130	78.72
SS 4100 IP65	100	4	65	190	280	130	95.42
SS 4125 IP65	125	4	65	190	280	130	110.72



SS 440 IP65

Safety Switches - AUX Modules

Item	Trade Price	
RAC20	20A AUX Module	3.20
RAC25	25A AUX Module	3.20
RAC32	32A AUX Module	3.20
RAC40	40A AUX Module	3.20
RAC63	63A AUX Module	3.20
RAC80	80A AUX Module	8.03



SS 4100 IP65

SOLAR DC Isolators

Item	Rating (A)	Poles	IP Rating	Trade Price
SS 416 IP65 DC	16	2	65	26.53
SS 432 IP65 DC	32	4	65	41.27



SS 416 IP65 DC

ENCLOSED DC CONTACTORS

Item	Rating (A)	Width mm	Height mm	Depth mm	Trade Price
KNL16 PV600C	16A	151	175	155	271.85

ISOLATOR SWITCHES ENCLOSED IP53 - IP65 METAL

Metalclad Isolator Switches - IP53

Item	Rating (A)	Poles	IP Rating	Width mm	Height mm	Depth mm	Trade Price
SW 20 IP53M	20	3	53	110	147	70	26.81
SW 32 IP53M	32	3	53	135	220	85	44.65
SW 40 IP53M	40	3	53	135	220	85	46.50
SW 63 IP53M	63	3	53	135	220	85	47.66
SW 80 IP53M	80	3	53	245	315	125	96.95
SW 100 IP53M	100	3	53	245	315	125	104.59
SW 125 IP53M	125	3	53	245	315	125	113.36



SW 20 IP53M

Polyester Isolator Switches - IP65

Item	Rating (A)	Poles	IP Rating	Width mm	Height mm	Depth mm	Trade Price
SW 63 IP65P	63	3	65	250	300	150	371.02
SW 125 IP65P	125	3	65	300	400	200	540.52
SW 160 IP65P	160	3	65	300	400	200	613.41
SW 200 IP65P	200	3	65	400	400	200	647.39
SW 250 IP65P	250	3	65	400	400	200	683.77
SW 400 IP65P	400	3	65	400	500	200	830.68
SW 630 IP65P	630	3	65	400	600	230	1,038.00

ISOLATOR SWITCHES ENCLOSED IP55 METAL

Metalclad Isolator Switches 3 Pole - IP55

Item	Rating (A)	Poles	Enclosure Size	IP Rating	Width mm	Height mm	Depth mm	Trade Price
GSW363 IP55M	63	3	1	55	200	300	150	169.37
GSW3125 IP55M	125	3	2	55	300	400	200	313.96
GSW3200 IP55M	200	3	2	55	300	400	200	363.00
GSW3250 IP55M	250	3	2	55	300	400	200	508.32
GSW3400 IP55M	400	3	3	55	500	600	250	747.15



GSW3200 IP55M

**above 400A available on request **

Metalclad Isolator - IP55 Accessories

Item	Cable Entry/ Cable Exit	For Distribution Use
Enclosure size 1	GN302015	GN302515 + CH3025 (2 x 8 mods)
Enclosure size 2	GN403020	GN403020 + CH4030 (3 x 11 mods)
Enclosure size 3	GN605025	GN604020 + CH6040 (4 x 16 mods)
Enclosure size 4	GN504025	GN504020 + CH5040 (3 x 16 mods)

ISOLATOR SWITCHES ENCLOSED IP55 POLYESTER

Metalclad Isolator Switches 4 Pole - IP55

Item	Rating (A)	Poles	Enclosure Size	IP Rating	Width mm	Height mm	Depth mm	Trade Price
GSW463 IP55M	63	4	1	55	200	300	150	176.24
GSW4125 IP55M	125	4	2	55	300	400	200	330.51
GSW4200 IP55M	200	4	2	55	300	400	200	431.13
GSW4250 IP55M	250	4	3	55	300	400	200	540.30
GSW4400 IP55M	400	4	4	55	500	600	250	789.90

Metalclad Isolator - IP55 Accessories

Item	Cable Entry/ Cable Exit	For Distribution Use
Enclosure size 1	GN302015	GN302515 + CH3025 (2 x 8 mods)
Enclosure size 2	GN403020	GN403020 + CH4030 (3 x 11 mods)
Enclosure size 3	GN605025	GN604020 + CH6040 (4 x 16 mods)
Enclosure size 4	GN504025	GN504020 + CH5040 (3 x 16 mods)

FUSE SWITCHES - ENCLOSED IP55 - BS Type METAL

Metalclad Fuse Switches 3 Pole - IP55

Item	Rating (A)	Poles	Fuse Size	Enclosure Size	IP Rating	Width mm	Height mm	Depth mm	Trade Price
GFS332 IP55MBS	32	3	A1	1	55	300	200	150	241.23
GFS363 IP55MBS	63	3	A2-A3	2	55	400	300	200	361.87
GFS3100 IP55MBS	100	3	A4	3	55	400	300	200	416.42
GFS3125 IP55MBS	160	3	A3-A4	3	55	400	300	200	427.76
GFS3200 IP55MBS	200	3	B1-B2	3	55	600	500	250	788.80
GFS3400 IP55MBS	400	3	B1-B4	4	55	600	500	250	996.36



FS332 IP55BS

Metalclad Fuse Switch - IP55 Accessories

Item	Cable Entry/ Cable Exit	For Distribution Use
Enclosure size 1	GN302015	GN302515 + CH3025 (2 x 8 mods)
Enclosure size 2	GN403020	GN403020 + CH4030 (3 x 11 mods)
Enclosure size 3	GN605025	GN604020 + CH6040 (4 x 16 mods)
Enclosure size 4	GN504025	GN504020 + CH5040 (3 x 16 mods)

FUSE SWITCHES - NH TYPE - ENCLOSED IP65 METAL

Polyester Fuse Switches - IP65

Item	Rating (A)	Poles	IP Rating	Width mm	Height mm	Depth mm	Trade Price
FS63 IP65P	63	3	65	250	300	140	550.90
FS125 IP65P	125	3	65	300	400	200	640.57
FS160 IP65P	160	3	65	300	400	200	655.51
FS250 IP65P	250	3	65	500	600	230	971.48
FS400 IP65P	400	3	65	600	800	300	1,328.08



FS332 IP55NH

FUSE SWITCHES -NH TYPE - ENCLOSED IP55 METAL

Metalclad Fuse Switches 3 Pole - IP55

Item	Rating (A)	Poles	Enclosure Size	IP Rating	Width mm	Height mm	Depth mm	Trade Price
GFS363 IP55MNH	63	3	2	55	300	400	200	374.88
GFS3125 IP55MNH	125	3	3	55	300	400	200	535.99
GFS3160 IP55MNH	160	3	3	55	300	400	200	539.03
GFS3200 IP55MNH	200	3	4	55	500	600	250	984.73
GFS3250 IP55MNH	250	3	4	55	500	600	250	984.73
GFS3400 IP55MNH	400	3	4	55	500	600	250	1,166.85

**above 400A available on request **



FS3250 IP55NH

Metalclad Fuse Switch - IP55 Accessories

Item	Cable Entry/ Cable Exit	For Distribution Use
Enclosure size 1	GN302015	GN302515 + CH3025 (2 x 8 mods)
Enclosure size 2	GN403020	GN403020 + CH4030 (3 x 11 mods)
Enclosure size 3	GN605025	GN604020 + CH6040 (4 x 16 mods)
Enclosure size 4	GN504025	GN504020 + CH5040 (3 x 16 mods)

CHANGEOVER SWITCHES - ENCLOSED IP53 - IP55 - IP65

Metalclad Changeover Switches - IP53

Item	Rating (A)	Poles	IP Rating	Width mm	Height mm	Depth mm	Trade Price
CO25IP53M	25	3	53	220	270	117	92.51
CO32IP53M	32	3	53	220	270	117	93.99
CO40IP53M	40	3	53	220	270	117	99.94
CO63IP53M	63	3	53	220	270	117	105.07
CO80IP53M	80	3	53	250	370	130	195.54
CO100IP53M	100	3	53	250	370	130	206.04
CO125IP53M	125	3	53	250	370	130	221.74



CO 80 IP53M

Metalclad Changeover Switches - IP55

GCO3125IP55M	125	3	55	500	400	250	744.07
GCO3160IP55M	160	3	55	500	400	250	787.85
GCO3200IP55M	160	3	55	500	400	250	1,001.55
GCO3250IP55M	250	3	55	500	400	250	1,040.95
GCO3400IP55M	400	3	55	500	400	250	1,352.05



CO 160 IP55M

Polyester Changeover Switches - IP65

CO25IP65P	25	4	65	190	280	130	103.90
CO32IP65P	32	4	65	190	280	130	108.10
CO40IP65P	40	4	65	190	280	130	111.57
CO63IP65P	63	4	65	190	280	130	116.85
CO80IP65P	80	4	65	342	253	129	247.06
CO100IP65P	100	4	65	342	253	129	260.70
CO125IP65P	125	4	65	300	200	140	602.06
CO160IP65P	160	4	65	400	500	200	867.84
CO250IP65P	250	4	65	400	600	230	1,121.00



CO 63 IP65P

METAL CLAD SWITCHGEAR

Meter Box

Item	Description	Rating (A)	Width mm	Height mm	Depth mm	Trade Price
ESBCT4	ESB CT Chamber	250A	500	500	250	438.20

Metalclad Enclosed Switchgear Link Box Complete- IP65

Item	Description	IP	Width mm	Height mm	Depth mm	Trade Price
LINKBOX70	5 x 16sq - 120sq Link Box	65	320	395	175	312.91
LINKBOX185	5 x 70sq - 185sq Link Box	65	320	395	175	428.89

ACCESSORIES

Item	Description	Trade Price
NPE 35	Neutral - Earth Terminal 35mm	13.13
NPE 120	Neutral - Earth Terminal 120mm	42.15
TBN185	Neutral - Earth Terminal 185mm	59.64
SEAL	Sealing Screw 5mm	2.27
SEALKIT	GPK Sealing Kit	16.35



NPE35



NPE120

DISCONNECTORS

FUSE SWITCH DISCONNECTS

Item	Rating (A)	Size	Trade Price
GKVL-00	160A	3 Pole NH00	47.52
GKVL-1	250A	3 Pole NH1	142.44
GKVL-2	400A	3 Pole NH2	226.25
GKVL-3	630A	3 Pole NH3	299.21



707.037.001

FUSE DISCONNECTORS

Item	Rating (A)	Poles	Size	Trade Price
EFD 101P	32A	1	10 x 38	3.41
EFD 102P	32A	2	10 x 38	7.46
EFD 103P	32A	3	10 x 38	10.74
EFD 221P	100A	1	22 x 58	13.10
EFD 223P	100A	3	22 x 58	42.41



EFD 101P



EFD 103P



EFD 221P



EFD 223P

FUSES - Cylindrical - DO

DO Fuses gG(gl)

Item	Rating (A)	Type	Trade Price
6NZ01	6	DO1	0.67
20NZ02	20	DO2	0.67
25NZ02	25	DO2	0.67
35NZ02	35	DO2	0.67
50NZ02	50	DO2	0.90
63NZ02	63	DO2	0.90



63NZ02

Fuses Cylindrical

Item	Rating (A)	Type	Size	Trade Price
FUSE 2A	2	10 X 38	0	1.05
FUSE 4A	4	10 X 38	0	0.65
FUSE 6A	6	10 X 38	0	0.75
FUSE 10A	10	10 X 38	0	0.54
FUSE 16A	16	10 X 38	0	0.97
FUSE 20A	20	10 X 38	0	0.97
FUSE 25A	25	10 X 38	0	1.05
FUSE 32A	32	10 X 38	0	1.05
MS63	63	22 X 58	2	3.22
MS80	80	22 X 58	2	3.22
MS100	100	22 X 58	2	3.22



FUSE 6A

FUSES NH 120kA gL-gC

Item	Rating (A)	Trade Price
NH00C		
NV00C 6A	6	3.87
NV00C 10A	10	3.87
NV00C 16A	16	3.87
NV00C 20A	20	3.87
NV00C 25A	25	3.03
NV00C 35A	35	3.03
NV00C 40A	40	3.03
NV00C 50A	50	3.03
NV00C 63A	63	2.95
NV00C 80A	80	3.42
NV00C 100A	100	3.42
NH00		
NV00 125A	125	4.51
NV00 160A	160	4.51
NH1		
NV1 200A	200	8.55
NV1 250A	250	8.55
NH1C		
NV1C 63A	63	6.02
NV1C 80A	80	6.02
NV1C 100A	100	6.02
NV1C 125A	125	6.02
NV1C 160A	160	6.02
NH2C		
NV2C 63A	63	9.59
NV2C 80A	80	9.59
NV2C 100A	100	9.59
NV2C 125A	125	9.59
NV2C 160A	160	9.33
NV2C 200A	200	9.59
NV2C 250A	250	9.59
NH2		
NV2 315A	315	10.86
NV2 355A	355	10.86
NV2 400A	400	10.86
NH3C		
NV3C 250A	250	16.92
NV3C 315A	315	16.92
NV3C 355A	355	16.92
NV3C 400A	400	16.92
NH3		
NV3 500A	500	18.91
NV3 630A	630	18.91
NH4		
NV4 630A	630	71.35
NV4 800A	800	71.35
NV4 1000A	1000	75.25





ELECTRIC VEHICLE CHARGING



DYNAMIC
LOAD
BALANCING



SMART
METERING



COMPREHENSIVE
WARRANTIES



MONITORING
SOLUTIONS



SEAI & OZEV
GRANT
APPROVED



Domestic Wall Mounted Charger - GLB Standard OCPP / OZEV

	Standard	OCPP / OZEV
	GLBDC	GLB-B
Basic Charging	Y	Y
Socket or Tethered Option(5m Cable)	Either	Either
Motorised Interlock	Y	Y
Output Options 6 - 32A set by dip switch	Y	Y
Available output range set by dip switch	7.4 kW	7.4 kW
Metering	O	Y
Dynamic Load Balancing	Y	Y
Input for timer / low tariff selection	Y	Y
Built-in DC Leakage Control	Y	Y
Wi-Fi Module	O	Lan
Communication	WiFi / Lan	Lan
RFID access control	O	O
Cloud Reporting system	G Cloud	OCPP
OCPP	-	1.5 / 1.6



Domestic Wall Charger Standard

Item	Model Type & Connection	Trade Price
DLM & DC Monitoring		Standard
GLBDC-T222 WO	3.7 kW - 22kW Socket Type 2	IS10101 983.25
GLBDC-T222 FC	3.7 kW - 22kW Fixed Lead Type 2	IS10101 1,035.00
DC Monitoring & PEN Fault Protection		Standard
GLBDC-T274WOPME	7.4 kW Socket Type 2	18th Edition 1,035.00
GLBDC-T274FCPME	7.4 kW Fixed Lead Type 2	18th Edition 1,086.75



FOR ACCESSORIES SEE PAGE 50

Domestic Wall Charger OCPP / OZEV

OCPP/OZEV DC Monitoring & PEN Fault Protection		
GLBBDCMT274WOLPE	7.4 kW Socket Type 2	1,624.64
GLBBDCMT274FCLPE	7.4 kW Fixed Lead Type 2	1,689.33



Office for
Zero Emission
Vehicles

GRANT APPROVED



Warranty * Mechanical Components MCB, RCD, RCBO 5 Years *EV Chargers 3 Years *All Other 2 Years

EV DISTRIBUTION BOARDS

with GARO Futuresmart™

NEW!

IP65 DISTRIBUTION BOARDS FOR DOMESTIC EV CHARGERS

GARO place great focus on developing products and solutions that will make the contractors life easier and also appeal to today's discerning consumer. With this in mind GARO have developed a new range of EV Distribution Boards in accordance with the latest development to regulations which now permit the connection of an EV charger at the customers meter cabinet or at the customers main over-current device in a multi-metering arrangement.

The ideal connection point for these chargers will always be the main internal distribution board, however in situations where it is difficult or impossible to run cables back to the customers distribution board, GAROs EV Distribution Boards will allow for quicker and neater installations and eliminates the need for a lengthy cable run. These units are designed to be fitted within, or beside, the external meter box. (see dimensions below)

PRODUCT CODE	MAIN DEVICE	ADDITIONAL DEVICES	DLM	SUITABLE FOR	PROTECTION
GC4EV40	63Amp DP MCB 10KA	40A RCBO	X	All Chargers	IP65
GC6EV40	63Amp DP MCB 10KA	40A RCBO, 100A Isolator	X	All Chargers	IP65
GC8EV40DLM	63Amp DP MCB 10KA	40A RCBO, 100A Isolator, Meter	✓	GARO Chargers*	IP65

* Includes a load management meter for GARO Chargers only



GC4EV40
(Width 166mm)



GC6EV40
(Width 202mm)



GC8EV40DLM
(Width 238mm)



I.S. 10101:2020
COMPLIANT



EFFICIENT &
NEAT INSTALL



TIME
SAVING



COMPREHENSIVE
WARRANTIES

ELECTRIC VEHICLE CHARGING

ELECTRICAL VEHICLE DISTRIBUTION BOARDS (IS10101)

Item	Enclosure	Total Modules	Free Modules	Incoming	IP Rating	Load Mangement	Trade Price
GC4EV40	GCUT4	4	0	RCBO A	65	-	82.53
GC6EV40	GCUT6	6	0	RCBO A	65	-	87.83
GC8EV40DLM	GCUT8	8	0	RCBO A	65	Yes	181.21



GC4EV40



GC6EV40



GC8EV40DLM

ELECTRICAL VEHICLE DISTRIBUTION BOARDS (18th Edition)

Item	Enclosure	Total Modules	Free Modules	Incoming	PEN Fault Detection	IP Rating	Load Management	Trade Price
G2EV40	G2-2	2	0	RCBO A	-	41	-	55.63
G4EV40	G4-4	4	2	RCBO A	-	41	-	58.48
G6EV40PME	G6-6	6	0	RCBO A	Yes	41	-	223.56
G6EVPME	G6-6	6	0	Terminals	Yes	41	-	207.00
G6EVPME132	G6-6	6	0	MCB	Yes	41	-	209.07
GC6EV40PME	GCUT6	6	0	RCBO A	Yes	65	-	244.05
G8EV40PMEB	G8S6	8	0	RCBO B	Yes	41	-	525.78
GC8EV40PMEB	GCUT8	8	0	RCBO B	Yes	65	-	506.22
G12EV40PMEDLMB	G12S10	12	1	RCBO B	Yes	41	Yes	828.00
GC12EV40PMEDLMB	GCUT12	12	1	RCBO B	Yes	65	Yes	828.00



G8EV40PMEB

Commercial Wall Mounted Charger - GLB

Standard

OCPP / OZEV

	GLBDC	GLB-B
Basic Charging	Y	Y
Socket or Tethered Option(5m Cable)	Either	Either
Motorised Interlock	Y	Y
Output Options 6 - 32A set by dip switch	Y	Y
Available output range set by dip switch	3.7kW - 22kW	3.7kW - 22kW
Optional Pillar	O	O
Master Slave configuration - max 32 chargers	Y	Y
Metering	O	O
Dynamic Load Balancing	Y	Y
Input for timer / low tariff selection	Y	Y
Built-in DC Leakage Control	Y	Y
Wi-Fi Module	O	O
Communication	WiFi / Lan	4G / WiFi / Lan
RFID access control	O	Y
Cloud Reporting system	O	OCPP
OCPP		1.5 / 1.6

O Optional Extra



Item	Model Type & Connection	Trade Price
------	-------------------------	-------------

DLM & DC Monitoring

GLBDC-T222WO	3.7 kW - 22 kW Socket Type 2	983.25
GLBDC-T222FC	3.7 kW - 22 kW Fixed Lead Type 2	1,035.00

OCPP/OZEV DC Monitoring

GLB-B-DCMT274WOL	Socket Type 2 7.4 kW	1,898.19
GLB-B-DCMT274FCL	Fixed Lead Type 2 7.4 kW	2,388.78

OCPP / OZEV DLM & DC Monitoring

GLB-B-DCMT222WOL	Socket Type 2 22kW RFID LAN	1,898.19
GLB-B-DCMT222WOM	Socket Type 2 22kW RFID 4G	2,388.78



FOR ACCESSORIES SEE PAGE 50

ELECTRIC VEHICLE CHARGING

DUAL WALL MOUNTED CHARGER - GTB STANDARD

	GTB	GTB With Meters	GTB With Meters & WiFi
Mode 3 Charging	Y	Y	Y
Socket or Tethered Option (FC)	Y	Y	Y
Motorised Interlock	Y	Y	Y
Output Options 6 - 32A (set by dipswitch)	Y	Y	Y
Available Output Range 7.4kW - 22kW	Y	Y	Y
Pillar Mounting	O	O	O
Primary Secondary Configuration (max 32 chargers)	Y	Y	Y
Metering	O	Y	Y
Dynamic Load Balancing *	Y	Y	Y
Input for timer / low tariff selection	Y	Y	Y
Built-in DC Leakage Control	Y	Y	Y
Wi-Fi Interface	-	-	Y
RFID access control	O	O	O
Cloud Reporting System	O	O	O

"O" Optional Extra

* Note: Dynamic Load Balancing requires meter GNM3D-RS485 or GNM1D-100-RS485 (sold separately)

Item	Model Type & Connection	Trade Price
------	-------------------------	-------------

GTB (Standalone or Secondary)

GTBDC-T274WO-A	Single Phase 7.4KW Twin Charger with Type11 Sockets	2,582.24
GTBDC-T274FC-A	Single Phase 7.4KW Twin Charger with Type11 Leads	3,121.25
GTBDC-T222WO-A	Three Phase 22KW Twin Charger with Type11 Sockets	2,624.16



GTB with Meters (Standalone or Secondary)

GTBDCM-T274WO-A	Single Phase 7.4KW Twin Charger with Meters & Type11 Sockets	2,729.73
GTBDCM-T274FC-A	Single Phase 7.4KW Twin Charger with Meters & Type11 Leads	3,268.76
GTBDCM-T222WO-A	Three Phase 22KW Twin Charger with Meters & Type11 Sockets	3,013.57



GTB with Meters & WiFi (Standalone or Primary)

GTBDCMW-T274WO-A	Single Phase 7.4KW Twin Charger with WiFi, Meters & Type11 Sockets	2,918.87
GTBDCMW-T274FC-A	Single Phase 7.4KW Twin Charger with WiFi, Meters & Type11 Leads	3,457.87
GTBDCMW-T222WO-A	Three Phase 22KW Twin Charger with WiFi, Meters & Type11 Sockets	3,202.68

GTB+ OCPP / OZEV with Meters

GTB-B-DCM-T274WOARL	OCPP 2 X 7.4kw Dual Charger LAN, Meter RFID	4,622.86
GTB-B-DCM-T222WOARL	OCPP 2 X 22kw Dual Charger LAN Meter RFID	4,951.43
GTB-B-DCM-T274WOARM	OCPP 2 X 7.4kw Dual Charger 4G Meter RFID	4,940.00
GTB-B-DCM-T222WOARM	OCPP 2 X 22kw Dual Charger 4G Meter RFID	5,268.57

FOR ACCESSORIES SEE PAGE 50

STREET CHARGER - LS4

OCPP / OZEV

	LAN & LANC	MC & MCC	AU & AUC
Basic Charging	Y	Y	Y
Type 2 Sockets	x 2	x 2	x 2
Motorised Interlock	Y	Y	Y
Output Factory Set	Y	Y	Y
Dynamic Load Balancing (see external meters below)	Y	Y	Y
Metering	Y	Y	Y
Core Balanced Protection (no nuisance tripping)	Y	Y	Y
Full Open OCPP	Y	Y	Y
PC Browser Interface	Y	Y	Y
LAN	Y	O	O
Wi-Fi	Y	Y	Y
RFID access control	Y	Y	Y
DC Leakage Protection	Y	Y	Y
Suitable for Wall Mounting		Y	Y
Comprehensive Cloud Reporting system	Y	Y	Y
4G Built in Modem		Y	Y
Auto Reclosing MCB / RCCB			Y



Item	Description	Trade Price
Standard (Tall) LAN Versions		
LS4DCMT274WO-LAN	2 x 7.4kw Outlets Metered, LAN & RFID	5,428.58
LS4DCMT222WO-LAN	2 x 22kw Outlets Metered, LAN & RFID	5,553.81
Standard (Tall) 4G Versions		
LS4DCMT274WO-MC	2 x 7.4kw Outlets Metered, RFID & 4G	5,847.75
LS4DCMT222WO-MC	2 x 22kw Outlets Metered, RFID & 4G	6,073.38
Compact Lan Versions		
LS4DCMT274WO-LANC	Compact 2 x 7.4kw Outlets Metered, LAN & RFID	5,428.58
LS4DCMT222WO-LANC	Compact 2 x 22kw Outlets Metered, LAN & RFID	5,553.81
Compact 4G Versions		
LS4DCMT274WO-MCC	Compact 2 x 7.4kw Outlets Metered, RFID & 4G	5,847.75
LS4DCMT222WO-MCC	Compact 2 x 22kw Outlets Metered, RFID & 4G	6,073.38
AUTO		
	Self Closing RCBO / RCCB	
LS4M-T222W 4G AU	2 x 22kw Outlets Metered, RFID & 4G	6,872.40
LS4M-T222W 4G AUC	Compact 2 x 22kw Outlets Metered, RFID & 4G	6,872.40



Compact

CASTRA - CHARGERS FOR CARAVAN / RECREATIONAL SITES

CLS1-DCM-W-T223WO-A	2 x 2.3kw T2 outlets Metered , WIFI, RFID 2 X IEC Socket 16A	3,641.81
CLS1-DCM-W-T237WO-A	2 x 3.7kw T2 outlets Metered , WIFI, RFID 2 X IEC Socket 16A	3,641.81



CASTRA

FOR ACCESSORIES SEE PAGE 50



Office for
Zero Emission
Vehicles

GRANT APPROVED

seai SUSTAINABLE
ENERGY AUTHORITY
OF IRELAND

EV ACCESSORIES

Item	Description				Trade Price
Meters		GLB	GTB	LS4	
GNM1D-RS485	Single phase local Meter 45 Amps	X	X		77.26
GNM1D-100-RS485	Single Phase DLM Meter 100 Amp	X	X		145.70
GNM3D-RS485	Three Phase DLM or local Meter 63 Amps	X	X	X	163.95
DLM200	Three Phase CT DLM Meter 200 Amps	X	X	X	725.01
DLM250	Three Phase CT DLM Meter 250 Amps			X	725.01
DLM400	Three Phase CT DLM Meter 400 Amps			X	725.01



Communication & Access		GLB	GTB	LS4	
RFID Cards	Pack of 5 RFID cards	X	X	X	60.63
RFID Tags	Pack of 5 RFID Tags	X	X	X	60.63
GLB-WIFI	WIFI Module for GLB	X			322.91
GLB-RFID	RFID module for GLB	X			110.93
GTB-RFIDKIT	Dual RFID Module for GTB		X		176.45
EVTESTTYPE 1 SKT	Tester EV Station Plug Type 1 socket	X	X	X	819.85
EVTEST TYPE2	Tester EV Station Plug Type 2 Fixed	X	X	X	827.90



Wall Brackets		GLB	GTB	LS4	
GTB-WB	GTB Wall Bracket (Required for 22KW)		X		47.65
VF-LS4	Ground/Wall Mounted Pedestal LS4			X	77.79

Ground Mounts		GLB	GTB	LS4	
GLBFD	Mounting Post for Single & Double GLB	X			301.34
ST-GHL	Single Charger Freestanding Pillar	X			563.32
ST-GHL-D	Double Charger Freestanding Pillar	X			602.55
GTB-PB-TUBE60	GTB Post Bracket 60mm (to be used with MVRP or MVRF)		X		59.43
MVRF	In Ground Fixing post 1550mm for GLBFD/ ST-GHL / LS4-PM	X	X	X	110.59
MVRP	Plate mounted post 750mm for GTB		X		110.59
GTB-PB-OVAL	GTB Post Bracket (to be used with MVR-AB)		X		117.04
MVR-AB	Oval Plate Mounted Post for GTB		X		263.11
LS4-PM	LS4 Fixing Bracket for MVRF			X	63.82
MF-LS4	LS4 Foundation Ground Support			X	156.98



ST-GHL

GLB Covers		GLB			
GLB-COVERWHITE	GLB White Cover	X			42.51
GLB-COVERGREY	GLB Grey Cover	X			42.51
GLB-COVERBUR	GLB Burgandy Cover	X			42.51



EV Charging Cables		GLB	GTB	LS4	
CCM32T2T1-5	Type 2 to Type 1 32A 240V 5 Meter EV Charging Cable	X	X	X	389.10
CCM32T2T2-5	Type 2 to Type 2 32A 240V 5 Meter EV Charging Cable	X	X	X	361.95
CCM32T2T2-8	Type 2 to Type 2 32A 240V 8 Meter EV Charging Cable	X	X	X	392.12
CCM32T2T2-10	Type 2 to Type 2 32A 240V 10 Meter EV Charging Cable	X	X	X	428.00
CCT32T2T2-5	Type 2 to Type 2 32A 400V 5 Meter EV Charging Cable	X	X	X	392.12
CCT32T2T2-8	Type 2 to Type 2 32A 400V 8 Meter EV Charging Cable	X	X	X	452.44
CCT32T2T2-10	Type 2 to Type 2 32A 400V 10 Meter EV Charging Cable	X	X	X	480.88



QC24 - 24KW DC RAPID EV CHARGING STATION

- Charges EV cars in less than 1 hour (typically)
- One charging output, either CCS Combo or CHAdeMO
- Compact design for fast & economic installation
- Maintenance free cooling system without air filter
- Compatible with all AC networks, 1-Phase & 3-Phase
- Robust design for outdoor use (IP 55 / IK 10)
- Dual Modem for separate operation & maintenance activities
- OCPP1.6 compliant for Smart Charging
- Front panel & user menu are customisable
- Wall pedestal mounted

Main Applications:

- Car Dealerships
- Service Centres
- Enterprise fleet
- Utility vehicle fleet



QC50 - 50KW DC RAPID EV CHARGING STATION

Quickly recharges the battery from 20% to 80% on most electric car batteries in just 20 minutes

- Premium solution for public charging environments
- 360° Lighting strip allows users to see the units charging status
- Strong and corrosion resistant metal cover
- Simple Touch Screen
- Easy to use, reliable & durable
- Full Control with RFID
- Customisable with your branding
- 1 x CHAdeMO Tethered Lead, 1 x CCS Tethered Lead
- OCPP1.6 compliant for Smart Charging
- Weight: 280 kg
- Mounted: Floor
- Dimensions: 1,955 mm[H] x 600 mm[W] x 540 mm[D]

Main Applications

- Service Stations
- Shopping Centres



Contact our EV Experts to discuss your requirements and pricing options

BACK OFFICE SOLUTIONS

G-CLOUD SMART CHARGING & MONITORING SOFTWARE

When you want full control over all Electric Vehicle Charging in apartment buildings, workplaces and beyond...

G-Cloud is GARO's proprietary web-based measurement collection service.

G-Cloud offers a clear charge monitoring solution, RFID management, information on energy consumption, user and period statistics, reports and payment data for GARO charge points.

DIVIDED USER STATISTICS - Each user receives an RFID tag that allows access to the nominated chargers.

For the user, there is access to statistics on electricity consumption for their own electric car as well as the opportunity to manage their tags.

VALUE ENERGY MONITORING - For the property owner, G-Cloud's measurement values create a specified basis that allows you to divide the payment between individual users. In addition, the energy monitoring of each charger, user and period provides valuable data for the evaluation of each charging point's use rate and location.

G-Cloud can be connected to both new or existing charging systems with GARO charging points GLBDC & GTBDC. Please note this is a non OCPP product, G-Cloud has been developed exclusively for GARO's EV Charging range.

Talk to our EV experts to learn more and to arrange a closer look at G-Cloud!



OCPP SOFTWARE SOLUTION

What is OCPP?

OCPP stands for Open Charge Point Protocol. This protocol allows charge points (hardware) and charge point software to talk to each other. Some companies use proprietary programming languages that can only communicate between their own charging stations. This will NOT allow them to talk to other companies charge points.

Why OCPP?

A major advantage of OCPP is that you're not locked into one vendor/software provider for the life of the product. OCPP allows you to mix and match EV charging points and software from different providers. If you're thinking of expanding your EV network but prefer the network capabilities from a different software provider then you will have the choice to combine various charge point manufactures with one software option.

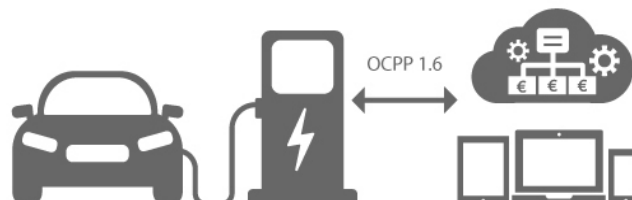
GAROs OCPP Offerings

GarO offers a number of EV Charge points configured with OCPP technology and ready to integrate to a payment & monitoring software solution.

GarO also provides a complete OCPP back office solution.

Software Features

- Overview/Dashboards
- Network and Device Status
- Fault Management with intelligent Alerting strategies (SMS, email)
- Remote Management – control of devices, software update deployment
- Access Control and management through card (RFID), Smartphone App or SMS options
- Billing & Revenue generation – tariffs, payment systems and accounting



Contact us to discuss your requirements and to arrange a demo of our software solution.



CEE PLUGS & SOCKETS



EXCEPTIONAL
VALUE



CE CERTIFIED



WEATHER
PROOF



STRONG &
DURABLE

IP44

Plugtops

Item	Pins	Poles	Operating Voltage V	Frequency Hz	Clock Pos	Colour Code	Package size	Trade Price
P216-4S	3	2p + E	100-130	50-60	4	■	10	3.61
P216-6S	3	2p + E	200-250	50-60	6	■	10	3.53
P232-4S	3	2p + E	100-130	50-60	4	■	10	11.30
P232-6S	3	2p + E	200-250	50-60	6	■	10	11.30
P416-6S	5	3p + N + E	200-415	50-60	6	■	10	7.71
P432-6S	5	3p + N + E	200-415	50-60	6	■	10	12.59



P216 - 6S

Couplers

S216-4S	3	2p + E	100-130	50-60	4	■	10	5.87
S216-6S	3	2p + E	200-250	50-60	6	■	10	5.87
S232-4S	3	2p + E	100-130	50-60	4	■	10	13.60
S232-6S	3	2p + E	200-250	50-60	6	■	10	13.60
S416-6S	5	3p + N + E	200-415	50-60	6	■	10	11.78
S432-6S	5	3p + N + E	200-415	50-60	6	■	10	14.53



S 216-4S

Wall Sockets

UI216-4S-RU	3	2p + E	100-130	50-60	4	■	10	7.74
UI216-6S-RU	3	2p + E	200-250	50-60	6	■	10	7.74
UI232-4S-RU	3	2p + E	100-130	50-60	4	■	10	14.53
UI232-6S-RU	3	2p + E	200-250	50-60	6	■	10	14.53
UI416-6S-RU	5	3p + N + E	200-415	50-60	6	■	10	11.78
UI432-6S-RU	5	3p + N + E	200-415	50-60	6	■	10	16.49



UI 232-6 S-RU

IP67

Plugtops

Item	Pins	Poles	Operating Voltage V	Frequency Hz	Clock Pos	Colour Code	Package size	Trade Price
PV216-4S	3	2p + E	100-300	50-60	4	■	10	7.60
PV216-6S	3	2p + E	200-250	50-60	6	■	10	7.60
PV232-4S	3	2p + E	100-130	50-60	4	■	10	13.51
PV232-6S	3	2p + E	200-250	50-60	6	■	10	13.84
PV416-6S	5	3p + N + E	200-415	50-60	6	■	2	10.10
PV432-6S	5	3p + N + E	200-415	50-60	6	■	2	16.35



PV 316-4S

Couplers

SV216-4S	3	2p + E	100-300	50-60	4	■	10	10.34
SV216-6S	3	2p + E	200-250	50-60	6	■	10	10.34
SV232-4S	3	2p + E	100-130	50-60	4	■	10	18.01
SV232-6S	3	2p + E	200-250	50-60	6	■	10	18.01
SV416-6S	5	3p + N + E	200-415	50-60	6	■	10	13.51
SV432-6S	5	3p + N + E	200-415	50-60	6	■	10	21.27



SV 316-6S

Wall Sockets

UIV216-4S-RU	3	2p + E	100-300	50-60	4	■	5	15.35
UIV216-6S-RU	3	2p + E	200-250	50-60	6	■	5	15.35
UIV232-4S-RU	3	2p + E	100-130	50-60	4	■	5	20.60
UIV232-6S-RU	3	2p + E	200-250	50-60	6	■	5	20.60
UIV416-6S-RU	5	3p + N + E	200-415	50-60	6	■	5	17.42
UIV432-6S-RU	5	3p + N + E	200-415	50-60	6	■	5	23.42



IUV 316-6S - RU

PLUGS 16A - 63A IP44

Connectable cable size:

16A, 1-2,5 mm²

32A, 2,5-6 mm²

63A, 6 -16 mm²

Degree of protection IP44

Accessories:

16A Cover Type TL216S

32A Cover Type TL232S

63A Cover Type TL63S



P216 - 6S



P463 - 6S

Item	Poles	Operating Voltage V	Frequency Hz	Clock pos. Colour code	Package size	Trade Price
P 216-4 S		100-130	50-60	4 ■	10	3.61
P 216-6 S		200-250	50-60	6 ■	10	3.53
P 232-4 S	3 2p + E	100-130	50-60	4 ■	10	11.30
P 232-6 S		200-250	50-60	6 ■	10	11.30
P 263-6 S		200-250	50-60	6 ■	2	35.06
P 316-4 S		100-130	50-60	4 ■	10	6.92
P 316-6 S	4 3p + E	380-415	50-60	6 ■	10	6.92
P 332-6 S		380-415	50-60	6 ■	10	11.91
P 363-6 S		380-415	50-60	6 ■	2	35.95
P 416-6 S		200-415	50-60	6 ■	10	7.71
P 432-6 S	5 3p + N + E	200-415	50-60	6 ■	10	12.59
P 463-6 S		200-415	50-60	6 ■	2	37.71

Other clock positions are produced to order.

PLUGS WATERTIGHT 16A - 125A IP67

Connectable cable size:

16A 1-2,5 mm²

32A 2,5-6 mm²

63A 6-16 mm²

125A 16-50 mm²

Degree of protection IP67

Accessories: Cover



PV 416-6S



PV 316-4S

Item	Poles	Operating Voltage V	Frequency Hz	Clock pos. Colour code	Package size	Trade Price
PV 216-4S		100-300	50-60	4 ■	10	7.60
PV 216-6S		200-250	50-60	6 ■	10	7.60
PV 232-4S		100-130	50-60	4 ■	10	13.51
PV 232-6S	3 2p + E	200-250	50-60	6 ■	10	13.84
PV 263-4S		100-130	50-60	4 ■	2	33.24
PV 263-6S		200-250	50-60	6 ■	2	27.42
PV 2125-6S		200-250	50-60	6 ■	2	140.72
PV 316-4S		100-130	50-60	4 ■	10	9.00
PV 316-6S		380-415	50-60	6 ■	10	9.00
PV 332-4S	4 3p + E	100-130	50-60	4 ■	10	14.52
PV 332-6S		380-415	50-60	6 ■	10	14.52
PV 363-6S		380-415	50-60	6 ■	2	36.71
PV 3125-6S		380-415	50-60	6 ■	2	151.11
PV 416-6S		200-415	50-60	6 ■	10	10.10
PV 432-6S	5 3p + N + E	200-415	50-60	6 ■	10	16.35
PV 463-6S		200-415	50-60	6 ■	2	37.42
PV 4125-6S		200-415	50-60	6 ■	2	155.77

Other clock positions are produced to order.

PLUGS ANGLED 16A and 32A IP44

Connectable cable size:

16A: 1-2,5 mm²

32A: 2,5-6 mm²

Degree of protection IP44



PA 216 - 6S

Type	Poles	Operating Voltage V	Frequency Hz	Clock pos. Colour code	Package size	Trade Price
PA 216-6 S	3 2p + E	200-250	50-60	6 ■	10	17.83
PA 416-4 S		100-130	50-60	4 ■	10	20.43
PA 416-6 S	5 3p + N + E	200-415	50-60	6 ■	10	19.63
PA 432-6 S		200-415	50-60	6 ■	10	28.06

PHASE INVERTER 16A and 32A IP44

Connector size:

16A: 1-2,5 mm²

32A: 2,5-6 mm²

Degree of protection IP44.

Accessories:

Covers TL416S, TL432S



FV 416 - 6S

Type	Poles	Operating Voltage V	Frequency Hz	Clock pos. Colour code	Package size	Trade Price
FV 316-6 S	4 2p + N + E	380-415	50-60	6 ■	10	18.04
FV 416-6 S	5 3p + N + E	200-415	50-60	6 ■	10	18.04
FV 432-6 S	5 3p + N + E	200-415	50-60	6 ■	10	19.08

Other clock positions are produced to order.

COUPLERS 16A - 63A IP44

Connectable cable size:

16A: 1-2,5 mm²

32A: 2,5-6 mm²

63A: 6-16 mm²

Degree of protection IP44



S 216-6S



S 216-4S

Type	Poles	Operating Voltage V	Frequency Hz	Clock pos. Colour code	Package size	Trade Price
S 216-4 S	3 2p + E	100-130	50-60	4 ■	10	5.87
S 216-6 S		200-250	50-60	6 ■	10	5.87
S 232-4 S		100-130	50-60	4 ■	10	13.60
S 232-6 S		200-250	50-60	6 ■	10	13.60
S 263-6 S	4 3p + E	200-250	50-60	6 ■	2	34.35
S 316-4 S		100-130	50-60	4 ■	10	7.35
S 316-6 S		380-415	50-60	6 ■	10	7.35
S 332-6 S		380-415	50-60	6 ■	10	14.21
S 363-6 S	5 3p + N + E	380-415	50-60	6 ■	2	34.35
S 416-6 S		200-415	50-60	6 ■	10	11.78
S 432-6 S		200-415	50-60	6 ■	10	14.53
S 463-6 S		200-415	50-60	6 ■	2	37.53

Other clock positions are produced to order.

COUPLERS WATERTIGHT 16A - 125A IP67

Waterproof design

Connectable cable size:

16A: 1-2,5 mm²

32A: 2,5-6 mm²

63A: 6-16 mm²

125A: 16-50 mm²

Degree of protection IP67



SV 332-4S



SV 316-6S

Type	Poles	Operating Voltage V	Frequency Hz	Clock pos. Colour code	Package size	Trade Price
SV 216-4S	3 2p + E	100-130	50-60	4 ■	10	10.34
SV 216-6S		200-250	50-60	6 ■	10	10.34
SV 232-4S		100-130	50-60	4 ■	10	18.01
SV 232-6S		200-250	50-60	6 ■	10	18.01
SV 263-4S		100-130	50-60	4 ■	2	52.94
SV 263-6S		200-250	50-60	6 ■	2	39.62
SV 2125-6S	4 3p + E	200-250	50-60	6 ■	2	169.92
SV 316-4S		100-130	50-60	4 ■	10	13.15
SV 316-6S		380-415	50-60	6 ■	10	11.77
SV 332-6S		380-415	50-60	6 ■	10	19.16
SV 363-6S		380-415	50-60	6 ■	2	42.70
SV 3125-6S		380-415	50-60	6 ■	2	164.48
SV 416-6S	5 3p + N + E	200-415	50-60	6 ■	10	13.51
SV 432-6S		200-415	50-60	6 ■	10	21.27
SV 463-6S		200-415	50-60	6 ■	2	52.23
SV 4125-6S		200-415	50-60	6 ■	2	177.53

Other clock positions are produced to order.

WALL SOCKET 16A - 63A IP44

For wall and machine mounting with cable connection from top & back

Connectable cable size:

16A: 1-2,5 mm². Solid cable 1-4 mm²

32A: 2,5-6 mm². Solid cable 2,5-10 mm²

63A: 6-16 mm² and solid cable 6-25 mm²

Supplied with cable gland entry

Degree of protection IP44



UI 232-6 S-RU

Type	Poles	Operating Voltage V	Frequency Hz	Clock pos. Colour code	Package size	Trade Price
UI 216-4 S - RU	3 2p + E	100-130	50-60	4 ■	10	7.74
UI 216-6 S - RU		200-250	50-60	6 ■	10	7.74
UI 232-4 S - RU		100-130	50-60	4 ■	10	14.53
UI 232-6 S - RU		200-250	50-60	6 ■	10	14.53
UI 263-6 S - RU	4 3p + E	200-250	50-60	6 ■	2	46.75
UI 316-4 S - RU		100-130	50-60	4 ■	10	13.38
UI 316-6 S - RU		380-415	50-60	6 ■	10	9.60
UI 332-6 S - RU		380-415	50-60	6 ■	10	14.82
UI 363-6 S - RU	5 3p + N + E	380-415	50-60	6 ■	2	49.66
UI 416-6 S - RU		200-415	50-60	6 ■	10	11.78
UI 432-6 S - RU		200-415	50-60	6 ■	10	16.49
UI 463-6 S - RU		200-415	50-60	6 ■	2	53.20

Wall sockets with double entry



UI 216-4 DE-RU

Type	Poles	Operating Voltage V	Frequency Hz	Clock pos. Colour code	Package size	Trade Price
UI 216-4 DE - RU	3 2p + E	100-130	50-60	4 ■	10	12.74
UI 216-6 DE - RU		200-250	50-60	6 ■	10	10.62
UI 232-6 DE - RU		200-250	50-60	6 ■	10	17.22
UI 263-6 S - RU		200-250	50-60	6 ■	2	46.75
UI 316-6 DE - RU	4 3p + E	380-415	50-60	6 ■	10	15.36
UI 332-6 DE -RU		380-415	50-60	6 ■	10	17.90
UI 363-6 S - RU		380-415	50-60	6 ■	2	49.66
UI 416-6 DE - RU		200-415	50-60	6 ■	10	16.51
UI 432-6 DE - RU	5 3p + N + E	200-415	50-60	6 ■	10	20.59
UI 463-6 S - RU		200-415	50-60	6 ■	2	53.20

Other clock positions are produced to order.

WALL SOCKET WATERTIGHT 16A - 125A IP67

For wall mounting with cable connection from top & back

Connectable cable size:

16A: 1-2,5 mm² & Solid cable 1-4 mm²

32A: 2,5-10 mm² & Solid cable 2,5-10 mm²

63A: 6-16 mm² & Solid cable 6-25 mm²

125A: 5 x 50 mm² to terminal block

Flexible 16-50 mm² and solid cable 16-70 mm²

Degree of protection IP67



UIV 316-6S - RU

Type	Poles	Operating Voltage V	Frequency Hz	Clock pos. Colour code	Package size	Trade Price
UIV 216-4S - RU	3 2p + E	100-130	50-60	4 ■	5	15.35
UIV 216-6S - RU		200-250	50-60	6 ■	5	15.35
UIV 232-4S - RU		100-130	50-60	4 ■	5	20.60
UIV 232-6S - RU		200-250	50-60	6 ■	5	20.60
UIV 263-4S - RU		100-130	50-60	4 ■	2	44.19
UIV 263-6S - RU		200-250	50-60	6 ■	2	44.19
UIV 2125-6S - RU	4 3p + E	200-250	50-60	6 ■	1	195.16
UIV 316-4S - RU		100-130	50-60	4 ■	5	16.35
UIV 316-6S - RU		380-415	50-60	6 ■	5	16.35
UIV 332-6S - RU		380-415	50-60	6 ■	5	21.33
UIV 363-6S - RV		380-415	50-60	6 ■	2	38.02
UIV 3125-6S - RU		380-415	50-60	6 ■	1	200.14
UIV 416-6S - RU	5 3p + N + E	200-415	50-60	6 ■	5	17.42
UIV 432-6S - RU		200-415	50-60	6 ■	5	23.42
UIV 463-6S - RU		200-415	50-60	6 ■	2	55.03
UIV 4125-6S - RU		200-415	50-60	6 ■	1	242.77

Other clock positions are produced to order.

WALL INLET 16A - 63A IP44

For wall mounting with cable connection possible from top & bottom

Connectable cable size:

16A: 1-2,5 mm² & Solid cable 1-4 mm²

32A: 2,5-6 mm² & Solid cable 2,5-10 mm²

63A: 6-25 mm²

Supplied with sealed gland entry M40

Degree of protection IP44.



II 232-6S - RI



II 216-4S - RI

Type	Poles	Operating Voltage V	Frequency Hz	Clock pos. Colour code	Package size	Trade Price
II 216-4 S - RI	3 2p + E	100-130	50-60	4	10	12.42
II 216-6 S - RI		200-250	50-60	6	10	12.42
II 232-4 S - RI		100-130	50-60	4	10	15.40
II 232-6 S - RI		200-250	50-60	6	10	15.02
II 263-6 S - RI		200-250	50-60	6	2	48.20
II 316-4 S - RI	4 3p + E	100-130	50-60	4	10	11.76
II 316-6 S - RI		380-415	50-60	6	10	12.92
II 332-6 S - RI		380-415	50-60	6	10	16.61
II 416-6 S - RI	5 3p + N + E	200-415	50-60	6	10	13.24
II 432-6 S - RI		200-415	50-60	6	10	26.35
II 463-6 S - RI		380-415	50-60	6	2	58.44

Other clock positions are produced to order.

WALL INLET WATERTIGHT 16A - 125A IP67

Waterproof inlet for wall mounting

Connectable cable size:

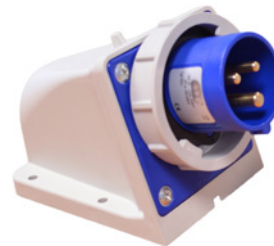
16A: 1-2,5 mm² & 1-4 mm² for solid cable

32A: 2,5-6 mm² & for solid cable 2,5-10 mm²

63A: 6-16 mm² & for solid cable 6-25 mm²

125A: 16-50 mm² & for solid cable 16-70 mm²

Degree of protection IP67.



IIV 216-6S - RI



IIV 463-6S - RI

Type	Poles	Operating Voltage V	Frequency Hz	Clock pos. Colour code	Package size	Trade Price
IIV 216-4S - RI	3 2p + E	100-130	50-60	4 ■	10	26.45
IIV 216-6S - RI		200-250	50-60	6 ■	10	26.45
IIV 232-4S - RI		100-130	50-60	4 ■	10	35.65
IIV 232-6S - RI		200-250	50-60	6 ■	10	35.65
IIV 263-4S - RI		100-130	50-60	4 ■	2	87.40
IIV 263-6S - RI		200-250	50-60	6 ■	2	80.06
IIV 2125-6 - RI	4 3p + E	200-250	50-60	6 ■	1	203.50
IIV 332-6S - RI		380-415	50-60	6 ■	10	51.34
IIV 363-6S - RI		380-415	50-60	6 ■	2	54.53
IIV 3125-6S - RI		380-415	50-60	6 ■	1	219.67
IIV 416-6S - RI		200-415	50-60	6 ■	10	30.48
IIV 432-6S - RI		200-415	50-60	6 ■	10	64.16
IIV 463-6S - RI	5 3p + N + E	200-415	50-60	6 ■	2	86.74
IIV 4125-6S - RI		200-415	50-60	6 ■	1	265.87

Other clock positions are produced to order.

CONNECTION OUTLETS - 3 WAY 16A IP44

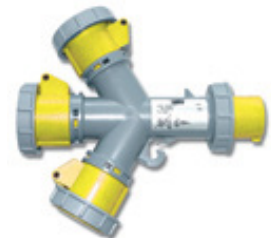
With IEC-CEE 16A socket inlet and 3 x 16A socket outlets
 Connectable cable size: 1,5-4 mm²
 Degree of protection IP44



Type	Poles	Connectors	Operating Voltage V	Frequency Hz	Clock pos.- Colour code	Package size	Trade Price
P3 S216-4S	3	3 x 16A socket outlets	110-130	50-60	4 ■	1	58.92
P3 S216-6S	3	3 x 16A socket outlets	200-250	50-60	6 ■	1	53.58

CONNECTION OUTLETS - 3 WAY 16A IP67

With IEC-CEE 16A socket inlet and 3 x 16A socket outlets
 Connectable cable size: 1,5-4 mm²
 Degree of protection IP67



Type	Poles	Connectors	Operating Voltage V	Frequency Hz	Clock pos. Colour code	Package size	Trade Price
PV3 S216-4S	3	3 x 16A socket outlets	110-130	50-60	4 ■	1	76.77
PV3 S216-6S	3	3 x 16A socket outlets	200-250	50-60	6 ■	1	71.57

ADAPTOR 16A - 13A BS IP44

With IEC-CEE 16A socket inlet & 3-pin BS 13A socket outlet
 Connectable cable size: 1,5-4 mm²
 Degree of protection IP44



Type	Poles	Operating Voltage V	Frequency Hz	Clock pos. Colour code	Package size	Trade Price
II216-6-13A	3	200-250	50-60	6 ■	10	23.59

Other clock positions are produced to order.

PANEL MOUNTED SOCKET WITH STRAIGHT MOUNTING PLATE 16A - 63A IP44

For panel mounting

Connectable cable size:

16A: 1-2,5 mm² & solid cable 1-4 mm².

32A: 2,5-6 mm² & solid cable 2,5-10 mm²

63A: 6-16 mm² & solid cable 6-25 mm²

Degree of protection IP44



UIL 216-6S



UI 316-4S

Type	Poles	Operating Voltage V	Frequency Hz	Clock pos. Colour code	Package size	Trade Price
UIL 216-4 S	3 2p + E	100-130	50-60	4	10	4.66
UIL 216-6 S		200-250	50-60	6	10	4.25
UI 216-4 S		100-130	50-60	4	10	4.62
UI 216-6 S		200-250	50-60	6	10	4.25
UI 232-4 S		100-130	50-60	4	10	6.38
UI 232-6 S		200-250	50-60	6	10	5.93
UI 263-4 S	4 3p + E	100-130	50-60	4	2	47.74
UI 263-6 S		200-250	50-60	6	2	36.71
UI 316-6 S	5 3p + N + E	380-415	50-60	6	10	5.30
UI 332-6 S		380-415	50-60	6	10	6.63
UI 363-6 S		380-415	50-60	6	2	35.39
UI 416-6 S	6 3p + N + E	200-415	50-60	6	10	5.52
UI 432-6 S		200-415	50-60	6	10	7.87
UI 463-6 S		200-415	50-60	6	2	38.93

Other clock positions are produced to order.

PANEL MOUNTED SOCKET WITH ANGLED MOUNTING PLATE 16A - 63A IP44

For panel mounting

Connectable cable size:

16A: 1-2,5 mm² & 1-4 mm² for solid cable

32A: 2,5-6 mm² & 2,5-10 mm² for solid cable

63A: 6-16 mm² & 6-25 mm² for solid cable

Degree of protection IP44



UIS 316-6S



UIS 263-6S

Type	Poles	Operating Voltage V	Frequency Hz	Clock pos.- colour code	Package size	Trade Price
UIS 216-4 S	3 2p + E	100-130	50-60	4 ■	10	4.66
UIS 216-6 S		200-250	50-60	6 ■	10	4.25
UIS 232-4 S		100-130	50-60	4 ■	10	7.21
UIS 232-6 S		200-250	50-60	6 ■	10	6.38
UIS 263-6 S		200-250	50-60	6 ■	2	35.11
UIS 316-6 S		380-415	50-60	6 ■	10	5.85
UIS 332-6 S	4 3p + E	380-415	50-60	6 ■	10	6.44
UIS 363-4 S		100-130	50-60	4 ■	2	37.58
UIS 363-6 S		380-415	50-60	6 ■	2	37.57
UIS 416-6 S	5 3p + N + E	200-415	50-60	6 ■	10	5.52
UIS 432-6 S		200-415	50-60	6 ■	10	7.87
UIS 463-6 S		200-415	50-60	6 ■	2	38.96

Other clock positions are produced to order.

PANEL MOUNTED SOCKET WATERTIGHT - ANGLED MOUNTING PLATE 16A - 125A IP67

Watertight socket for panel mounting

Connectable cable size:

16A: 1-2,5 mm² & 1-4 mm² for solid cable

32A: 2,5-6 mm² & 2,5-10 mm² for solid cable.

63A: 6-16 mm² & 6-25 mm² for solid cable

125A: 16-50 mm² & 16-70 mm² for solid cable

Supplied with gasket

Degree of protection IP67



UIV 232-4S



UISV 263-6S

Type	Poles	Operating Voltage V	Frequency Hz	Clock pos. Colour code	Package size	Trade Price
UISV 216-4S	3 2p + E	100-130	50-60	4 ■	10	10.59
UISV 216-6S		200-250	50-60	6 ■	10	10.22
UISV 232-4S		100-130	50-60	4 ■	10	13.31
UISV 232-6S		200-250	50-60	6 ■	10	12.72
UISV 263-6S		200-250	50-60	6 ■	2	36.96
UISV 2125-6S		200-250	50-60	6 ■	2	69.55
UISV 316-6S	4 3p + E	380-415	50-60	6 ■	10	10.96
UISV 332-6S		380-415	50-60	6 ■	10	13.42
UISV 3125-6S		380-415	50-60	6 ■	2	72.85
UISV 416-6S	5 3p + N + E	200-415	50-60	6 ■	10	12.07
UISV 432-6S		200-415	50-60	6 ■	10	14.52
UISV 463-6S		200-415	50-60	6 ■	2	41.07
UISV 4125-6S		200-415	50-60	6 ■	2	76.28

Other clock positions are produced to order.

PANEL MOUNTED INLET WITH STRAIGHT MOUNTING PLATE 16A - 63A IP44

For panel mounting

Connectable cable size:

16A: 1,5-4 mm²

32A: 2,5-10 mm²

63A: 6-25 mm²

Degree of protection IP44



II 416-6S

Type	Poles	Operating Voltage V	Frequency Hz	Clock pos. Colour code	Package size	Trade Price
II 216-4 S	3 2p+E	100-130	50-60	4 ■	10	5.12
II 216-6 S		200-250	50-60	6 ■	10	5.12
II 232-4 S		100-130	50-60	4 ■	10	7.41
II 232-6 S		200-250	50-60	6 ■	10	7.42
II 263-6 S		200-250	50-60	6 ■	4	22.09
II 316-4 S	4 3p + E	100-130	50-60	4 ■	10	6.38
II 316-6 S		380-415	50-60	6 ■	10	6.38
II 332-6 S		380-415	50-60	6 ■	10	8.08
II 416-6 S		200-415	50-60	6 ■	10	6.38
II 432-6 S	3p+N+E	200-415	50-60	6 ■	10	8.48

PANEL MOUNTED INLET WATERTIGHT - ANGLED MOUNTING PLATE 63A + 125A IP67

Waterproof inlet for panel mounting

Connectable cable size:

63A: 6-16 mm² and for solid cable 6-25 mm²

125A: 16-50 mm² and for solid cable 16-70 mm²

Supplied with gasket

Degree of protection IP67



IIV 263-4

Type	Poles	Operating Voltage V	Frequency Hz	Clock pos. Colour code	Package size	Trade Price
IIV 263-4		100-130	50-60	4 ■	2	59.50
IIV 263-6	3 2p + E	200-250	50-60	6 ■	2	43.72
IIV 2125-4		100-130	50-60	4 ■	2	113.05
IISV 2125-6S		200-250	50-60	6 ■	2	94.20
IIV 363-6	4 3p + E	380-415	50-60	6 ■	2	52.06
IIV 3125-6		380-415	50-60	6 ■	2	108.90
IIV 463-6	5 3p + N + E	200-415	50-60	6 ■	2	52.06
IIV 4125-6		200-415	50-60	6 ■	2	99.75

Other clock positions are produced to order.

COMBINATION UNITS 16A - 32A IP44



Type		Trade Price
Wall Socket with 4 Module Window 16A-32A IP44		
URBB 216-4S	16A 3PIN 110V SOCKET C/W 4MOD IP44	64.05
URBB 216-6S	16A 3PIN 230V SOCKET C/W 4MOD IP44	59.12
URBB 316-6S	16A 4PIN 400V SOCKET C/W 4 MOD IP44	60.17
URBB 416-6S	16A 5PIN 400V SOCKET C/W 4MOD IP44	60.53
<hr/>		
URBB 232-4S	32A 3PIN 110V SOCKET C/W 4MOD IP44	72.15
URBB 232-6S	32A 3PIN 230V SOCKET C/W 4MOD IP44	65.81
URBB 332-6S	32A 4PIN 400V SOCKET C/W 4 MOD IP44	66.16
URBB 432-6S	32A 5PIN 400V SOCKET C/W 4MOD IP44	66.51



Type		Trade Price
Interlocked Socket Outlet IP44 16A-32A		
UBB 216-4S	16A 3PIN 110V Switched Socket IP44	53.31
UBB 216-6S	16A 3PIN 230V Switched Socket IP44	51.03
UBB 316-6S	16A 4PIN 400V Switched Socket IP44	59.81
UBB 416-6S	16A 5PIN 400V Switched Socket IP44	60.53
<hr/>		
UBB 232-4S	32A 3PIN 110V Switched Socket IP44	54.37
UBB 232-6S	32A 3PIN 220V Switched Socket IP44	53.31
UBB 332-6S	32A 4PIN 400V Switched Socket IP44	56.30
UBB 432-6S	32A 5PIN 400V Switched Socket IP44	73.20

INTERLOCKED SOCKETS OUTLETS WATERTIGHT 16A - 125A IP67

Watertight socket for wall mounting with cable connection from top & bottom

Connectable cable size:

16A: 1-2,5 mm² and for solid cable 1-4 mm²

32A: 2,5-6 mm² and for solid cable 2,5-10 mm²

63A: 6-16 mm² and for solid cable 6-25 mm²

125A: 50 mm²

Degree of protection IP67



UBV 3125-6



UBV 263-6SI

Type	Poles	Operating Voltage V	Frequency Hz	Clock pos. Colour code	Package size	Trade Price
16A, 32A 63A						
UBC 216-4S	3 2p + E	100-130	50-60	4 ■	1	73.02
UBC 216-6S		200-250	50-60	6 ■	1	73.02
UBC 232-4S		100-130	50-60	4 ■	1	76.72
UBC 232-6S		200-250	50-60	6 ■	1	76.72
UBV 263-6SI		200-250	50-60	6 ■	1	211.70
UBC 316-6S	4 3p + E	380-415	50-60	6 ■	1	74.55
UBC 332-6S		380-415	50-60	6 ■	1	81.88
UBV 363-6SI		380-415	50-60	6 ■	1	215.71
UBC 416-6S	5 3p + N + E	230-400	50-60	6 ■	1	78.53
UBC 432-6S		230-400	50-60	6 ■	1	88.73
UBV 463-6S		230-400	50-60	6 ■	1	221.67

Type	Poles	Operating Voltage V	Frequency Hz	Clock pos. Colour code	Package size	Trade Price
125A						
UBV 2125-6S	3 2p + E	200-250	50-60	6 ■	1	1,131.23
UBV 3125-6S	4 3p + E	380-415	50-60	6 ■	1	1,165.81
UBV 4125-6S	5 3p + N + E	200-415	50-60	6 ■	1	1,212.44

INTERLOCKED COMBINATION UNITS WATERTIGHT 16A - 125A IP67

Combination unit with socket outlet in watertight design.
 Cable connection possible from top and bottom.
 Can be equipped with components up to a max of 5-8 modules. (100 mm).
 Connectable cable size:

- 16A: 1-2,5 mm² and for solid cable 1-4 mm²
- 32A: 2,5-6 mm² and for solid cable 2,5-10 mm²
- 63A: 6-16 mm² and for solid cable 6-25 mm²
- 125A: 50 mm²

Degree of protection IP67.

Components sold separately.



URBBV 363-6S

Type	Poles	Module space for Components	Operating Voltage V	Clock pos. Colour code	Package size	Trade Price
------	-------	-----------------------------	---------------------	------------------------	--------------	-------------

16A

URBBV 216-4S	3	5	100-130	4 ■	1	111.99
URBBV 216-6S	2p + E	5	200-250	6 ■	1	111.99
URBBV 316-6S	4 3p + E	5	380-415	6 ■	1	114.75
URBBV 416-4S	5	5	100-130	4 ■	1	118.41
URBBV 416-6S	3p + N + E	5	200-415	6 ■	1	115.53

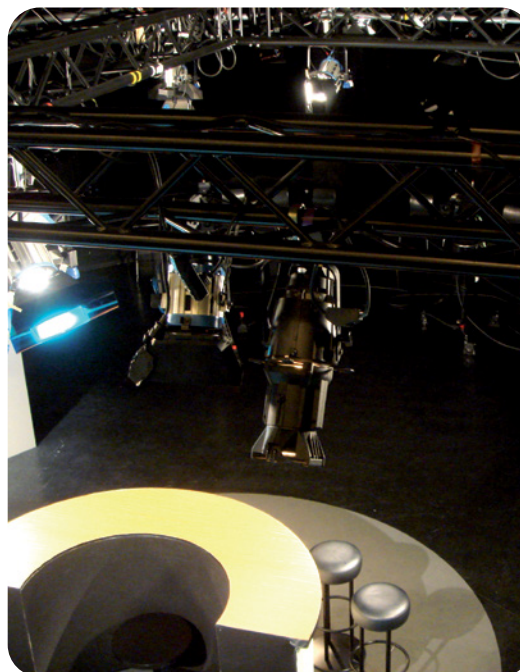
32A

URBBV 232-4S	3	5	100-130	4 ■	1	164.21
URBBV 232-6S	2p + E	5	200-250	6 ■	1	168.32
URBBV 332-6S	4 3p + E	5	380-415	6 ■	1	174.73
URBBV 432-6S	5 3p + N + E	5	200-415	6 ■	1	180.01

63A

URBBV 263-6S	3 2p + E	7	200-250	6 ■	1	336.48
URBBV 363-6S	4 3p + E	7	380-415	6 ■	1	340.40
URBBV 463-6S	5 3p + N + E	7	200-415	6 ■	1	345.69

GARO PRO SCENE



When there is a special requirement for top quality and invisibility e.g. at various events in the entertainment arena, there is a need for 'invisible' electricity. Cables, sockets and terminal boxes need to be discreet and not be seen.

GARO has a special range comprising the more commonly used plugs and couplers

Connectors are screw type simple connect as with the GARO Pro Range.

Degree of Protection:

IP44 16 - 32A

IP67 63 - 125 A

PRO SCENE PLUGS & COUPLERS Type 16A & 32A IP44

Connectable cable size:

16A: 1-2,5 mm²

32A: 2,5-6 mm²

Degree of Protection IP44



S 216-6 S - B



P 316 - 6 S - B

PRO SCENE PLUGS & COUPLERS 63A & 125A WATERTIGHT IP67

PLUGS & COUPLERS 63A and 125A

Connectable cable size:

63A: 6-16 mm²

125A: 16-50 mm²

Degree of protection IP67



S 4125 - 6 S+B



P 4125 6 S+B

PRO SCENE PLUGS & COUPLERS Type 16A & 32A IP44

PLUGS IP44	Poles	Operating Voltage V	Frequency Hz	Clock pos. Colour code	Package size	Trade Price
16 A						
P 216-6 S-B	3- 2p+E	200-250	50-60	6 ■	10	4.90
P 316-6 S-B	4- 3p+E	380-415	50-60	6 ■	10	6.66
P 416-6 S-B	5- 3p+N+P	200-415	50-60	6 ■	10	6.94
32 A						
P 232-6 S-B	3- 2p+E	200-250	50-60	6 ■	10	9.25
P 332-6 S-B	4- 3p+E	380-415	50-60	6 ■	10	10.10
P 432-6 S-B	5- 3p+N+P	200-415	50-60	6 ■	10	10.43

COUPLERS IP44	Poles	Operating Voltage V	Frequency Hz	Clock pos. Colour code	Package size	Trade Price
16 A						
S 216-6 S-B	3- 2p+E	200-250	50-60	6 ■	10	6.94
S 316-6 S-B	4- 3p+E	380-415	50-60	6 ■	10	9.25
S 416-6 S-B	5- 3p+N+P	200-415	50-60	6 ■	10	10.39
32 A						
S 232-6 S-B	3- 2p+E	200-250	50-60	6 ■	10	12.13
S 332-6 S-B	4- 3p+E	380-415	50-60	6 ■	10	12.71
S 432-6 S-B	5- 3p+N+P	200-415	50-60	6 ■	10	13.58

PRO SCENE PLUGS & COUPLERS 63A & 125A WATERTIGHT IP67

PLUGS IP67	Poles	Operating Voltage V	Frequency Hz	Clock pos. Colour code	Package size	Trade Price
63 A						
P 263-6 S-B	3- 2p+E	200-250	50-60	6 ■	2	45.67
P 363-6 S-B	4- 3p+E	380-415	50-60	6 ■	2	47.05
P 463-6 S-B	5- 3p+N+P	200-415	50-60	6 ■	2	53.09
125 A						
P 2125-6 S-B	3- 2p+E	200-250	50-60	6 ■	2	105.21
P 3125-6 S-B	4- 3p+E	380-415	50-60	6 ■	2	110.75
P 4125-6 S-B	5- 3p+N+P	200-415	50-60	6 ■	2	121.82

COUPLERS IP67	Poles	Operating Voltage V	Frequency Hz	Clock pos. Colour code	Package size	Trade Price
63 A						
S 263-6 S-B	3- 2p+E	200-250	50-60	6 ■	2	55.85
S 363-6 S-B	4- 3p+E	380-415	50-60	6 ■	2	57.69
S 463-6 S-B	5- 3p+N+P	200-415	50-60	6 ■	2	63.68
125 A						
S 2125-6 S-B	3- 2p+E	200-250	50-60	6 ■	2	115.34
S 3125-6 S-B	4- 3p+E	380-415	50-60	6 ■	2	121.82
S 4125-6 S-B	5- 3p+N+P	200-415	50-60	6 ■	2	133.79



Sweden • Norway • Finland • Poland • Ireland • UK

GARO Electric Ltd
Unit 19/307
Northwest Business Park
Ballycoolin
Dublin 15

Tel: 01-8665360
sales@garo.ie
www.garo.ie

